



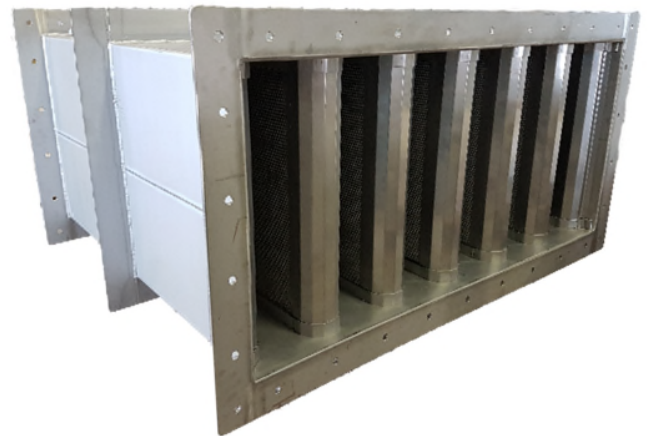
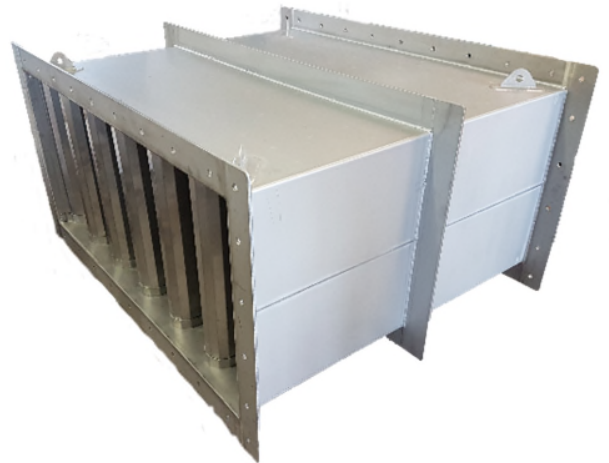
IKM – RSA

RECTANGULAR SOUND ATTENUATORS

DESCRIPTION

Rectangular sound attenuators are designed to reduce transmission of noise through the ductwork. A sound attenuator consists of a baffle within the ductwork. The physical dimensions and baffle configuration of sound attenuators are selected to attenuate a specific range of frequencies. Unlike conventional internally lined ductwork, which is only effective at attenuating mid- and high-frequency noise, sound attenuators can achieve broader band attenuation in relatively short lengths. Sound attenuators are essentially used as a passive noise-control device.

Material:
AISI 316L (1,4404 / 1,4401)



CONTACT

PHONE:
+47 958 13 528

WEBSITE:
www.IKM.no

EMAIL:
ikm.hvac@ikm.no

Product code:

Type	IKM-RSA	xxx	yyy
Width x Height / Ø			
Duct Class			