

PRODUCT CATALOGUE



H₂O

FAN COIL UNITS

FROM 1.3 kW TO 97 kW (FROM 0.5 TON TO 28 TON)

FAN COIL UNITS:



1,3 - 43 kW
cooling Capacity



2,7 - 97 kW
heating Capacity

COMFORT FOR ANY ENVIRONMENT:

IKM offers a complete range of fan coil units: free-standing, built-in, wall-mounted, water cassette and modular ductable. They are designed for different types of installation in domestic or service ambients, such as offices and shops.

Inserted in a system equipped with a liquid Chiller, the fan coils generate cool air silently and immediately. During the winter time, if used together with a heating system.

Boiler or Heat Pump, they provide warm air thus meeting home or business heating needs. Installation is quick and very simple, thanks also to the wide selection of accessories that completes the supply and makes easier the assembly phase.

FAN COIL UNITS BENEFITS:

Solution for 2 and 4-Pipe systems

EC INVERTER fans for high efficiency

Silent operation

Easy installation and configuration

BENEFITS:

Solution for 2 and 4-Pipe systems:

The units are adaptable to different types of system solution. The units are available with single coil (2-Pipe system), with electrical heater or with two coils (4-Pipe system).



2-Pipe & 4-Pipe
Systems

BENEFITS:

EC INVERTER fans for high efficiency:

The IKM fan coil units can be equipped with EC INVERTER fans with brushless motor BLDC with permanent magnet, that is controlled by an Inverter board directly installed on board of the unit (available as standard configuration on wall mounted unit).

The air flow can be continuously modified to ensure a perfect adaptability to the load without any temperature fluctuations. This guarantees excellent thermohygrometric performance, both in terms of achievement's speed of the required conditions and maintenance. Thanks to the EC Inverter fans it is possible to achieve superior performance compared to the traditional solutions even from energy consumption point of view.

Units with EC Inverter fans have an energy consumption up to 50% lower than comparable 3-Speed models. The lower energy consumption and the absence of starting current ensures a considerable reduction of the power installed in the building. (4-Pipe system).



EC Inverter
Fan



Energy Saving

BENEFITS:

Silent operation:

On EC INVERTER models the fans rotation speed is modulated according with the real thermal load required by the system, with great benefits in terms of noiseless operation, especially at night when the power required is low.



Silent operation

Easy installation and configuration:

IKM fan coil units have been designed to simplify installation and configuration procedures.

HWV/EC wall mounted model feature flexible hook-ups, 3-way valve included and is also pre-set for master-slave functioning, with RS485 serial interface.

TCW water cassettes features auxiliary moisture drain pan already included and are pre-set for master-slave functioning, with RS485 serial interface.



Easy installation & configuration

RANGE:

IKM offers a complete range of fan coil units: free-standing, built-in, wall-mounted, water cassette and modular ductable.

The models, also available with EC INVERTER fans, cover the capacity for cooling from 1,3 to 43 kW and for heating from 2,7 to 97 kW.



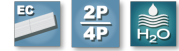
FVW 13÷74 FLOYD:



VERSIONS:

- Vertical unit, bottom inlet and vertical delivery
- Vertical unit, front inlet and vertical delivery
- Horizontal unit, rear inlet and horizontal delivery
- Horizontal unit, bottom inlet and horizontal delivery

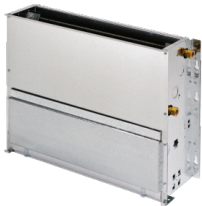
HWW/EC 22÷62:



VERSIONS:

- Unit with 3-Way valve

FIW 13÷74:



VERSIONS:

- Vertical unit, bottom inlet and vertical delivery
- Vertical unit, front inlet and vertical delivery
- Horizontal unit, rear inlet and horizontal delivery
- Horizontal unit, bottom inlet and horizontal delivery

TCW 22÷122:



VERSIONS:

- Base unit
- Unit with coil for 4-Pipe system

UTW 63÷544:



VERSIONS:

- Base unit



EC INVERTER
tangential fan



H₂O



For 2pipe
Systems



Radial fan



EC INVERTER
radial fan



For 2-Pipe &
4-Pipe systems

FVW 13÷74:


Fan Coil units with cabinet and 3-speed or EC inverter radial fans

TECHNICAL DATA:

MODEL		13	14	23	24	33	34	43
Cooling:								
Total cooling capacity (1) (4)	kW	1,31	1,49	1,77	2,05	2,47	2,77	3,11
Sensible cooling capacity (1) (4)	kW	1,09	1,26	1,45	1,68	1,96	2,16	2,42
Water flow (1) (4)	l/h	225	256	304	353	425	476	535
Pressure Drops (1) (4)	kPa	5	1	11	6	8	5	14
Heating:								
Heating capacity (2) (4)	kW	3,20	3,45	4,19	4,53	5,70	6,35	7,03
Water flow (2) (4)	l/h	275	297	360	390	490	546	605
Pressure drops (2) (4)	kPa	4	1	8	2	6	4	11
Rows:	n°	3	4	3	4	3	4	3
Water connections:								
In/Out	"G	1/2"	1/2"	1/2"	1/2"	1/2"	1/2"	1/2"
Air flow:								
Max	m³/h	240	240	340	340	430	430	540
Med	m³/h	190	190	260	260	340	340	420
Min	m³/h	140	140	170	170	250	250	280
Air Flow (EC version):								
Max	m³/h	---	---	340	340	430	430	540
Min	m³/h	---	---	150	150	180	180	230
Additional Coil:								
Heating capacity (2) (4)	kW	1,50	1,50	2,16	2,16	2,92	2,92	3,75
Water flow (2) (4)	l/h	129	129	186	186	251	251	322
Pressure drops (2) (4)	kPa	5	5	9	9	15	15	26
Rows	n°	1	1	1	1	1	1	1
Water connections	"G	1/2"	1/2"	1/2"	1/2"	1/2"	1/2"	1/2"
Electrical Heater:								
Power supply	V/Ph/Hz	←----- 230/1/50 ----->						
Absorbed power	kW	0,6	0,6	1,0	1,0	1,6	1,6	2,0
Electrical Characteristics:								
Power supply	V/Ph/Hz	←----- 230/1/50 ----->						
Max absorbed power	kW	0,03	0,03	0,05	0,05	0,05	0,05	0,07
Electrical Characteristics (EC version):								
Power supply	V/Ph/Hz	←----- 230/1/50 ----->						
Max absorbed power	kW	---	---	0,02	0,02	0,03	0,03	0,04
Sound Pressure:								
Max (3)	dB(A)	41	41	44	44	40	40	44
Med (3)	dB(A)	34	34	38	38	34	34	37
Min (3)	dB(A)	26	26	26	26	25	25	27
Sound Pressure (EC version):								
Max (3)	dB(A)	---	---	44	44	40	40	44
Min (3)	dB(A)	---	---	25	25	24	24	26
Weights:								
Transport weight	Kg	16	16	19	19	24	25	28
Operating weight	Kg	14	14	17	17	22	23	26
Dimensions:								
Length	mm	650	650	780	780	1040	1040	1170
Width	mm	210	210	210	210	210	210	210
Height	mm	500	500	500	500	500	500	500
Feet	mm	90	90	90	90	90	90	90

NOTES:

- Ambient air temperature 27 °C d.b./19 °C w.b., water temperature 7/12 °C
- Ambient air temperature 20 °C d.b., water temperature 70/60 °C
- Sound pressure level measured at 1 m from the unit with reverberation time 0,5 s
- Performances also valid for EC version
- Maximum operating pressure 1000 kPa.
- Maximum inlet water temperature 90°C
- Inhibited ethylene glycol can be added to the water.

FVW 13÷74:


Fan Coil units with cabinet and 3-speed or EC inverter radial fans

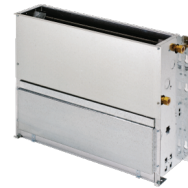

TECHNICAL DATA:

MODEL		44	53	54	63	64	73	74
Cooling:								
Total cooling capacity (1) (4)	kW	3,54	4,04	4,58	5,09	5,96	6,45	7,26
Sensible cooling capacity (1) (4)	kW	2,71	3,12	3,47	3,86	4,63	5,07	5,57
Water flow (1) (4)	l/h	609	695	788	875	1025	1109	1249
Pressure Drops (1) (4)	kPa	9	26	17	8	5	16	15
Heating:								
Heating capacity (2) (4)	kW	7,75	9,01	9,93	11,69	13,00	14,59	16,19
Water flow (2) (4)	l/h	666	775	854	1005	1118	1255	1392
Pressure drops (2) (4)	kPa	7	20	13	6	4	12	8
Rows:								
	n°	4	3	4	3	4	3	4
Water connections:								
In/Out	"G	1/2"	1/2"	1/2"	1/2"	1/2"	1/2"	1/2"
Air flow:								
Max	m³/h	540	690	690	910	910	1180	1180
Med	m³/h	420	530	530	730	730	810	810
Min	m³/h	280	400	400	510	510	590	590
Air Flow (EC version):								
Max	m³/h	540	690	690	910	910	1180	1180
Min	m³/h	230	300	300	420	420	500	500
Additional Coil:								
Heating capacity (2) (4)	kW	3,75	4,65	4,65	6,01	6,01	7,84	7,84
Water flow (2) (4)	l/h	322	400	400	517	517	674	674
Pressure drops (2) (4)	kPa	26	18	18	13	13	24	24
Rows	n°	1	1	1	1	1	1	1
Water connections	"G	1/2"	1/2"	1/2"	1/2"	1/2"	1/2"	1/2"
Electrical Heater:								
Power supply	V/Ph/Hz	<----- 230/1/50 ----->						
Absorbed power	kW	2,0	2,5	2,5	3,0	3,0	4,0	4,0
Electrical Characteristics:								
Power supply	V/Ph/Hz	<----- 230/1/50 ----->						
Max absorbed power	kW	0,07	0,09	0,09	0,16	0,16	0,19	0,19
Electrical Characteristics (EC version):								
Power supply	V/Ph/Hz	<----- 230/1/50 ----->						
Max absorbed power	kW	0,04	0,07	0,07	0,09	0,09	0,13	0,13
Sound Pressure:								
Max (3)	dB(A)	44	46	46	48	48	52	52
Med (3)	dB(A)	37	39	39	43	43	42	42
Min (3)	dB(A)	27	33	34	34	34	34	34
Sound Pressure (EC version):								
Max (3)	dB(A)	44	46	46	48	48	52	52
Min (3)	dB(A)	26	29	29	28	28	33	33
Weights:								
Transport weight	Kg	29	33	34	43	44	54	56
Operating weight	Kg	27	31	32	41	42	52	54
Dimensions:								
Length	mm	1170	1430	1430	1430	1430	1690	1690
Width	mm	210	210	210	275	275	275	275
Height	mm	500	500	500	570	570	570	570
Feet	mm	90	90	90	90	90	90	90

NOTES:

- Reference conditions at page 10

Fan Coil units for built-in installation with 3-speed or EC inverter radial fans


TECHNICAL DATA:

MODEL		13	14	23	24	33	34	43
Cooling:								
Total cooling capacity (1) (4)	kW	1,31	1,49	1,77	2,05	2,47	2,77	3,11
Sensible cooling capacity (1) (4)	kW	1,09	1,26	1,45	1,68	1,96	2,16	2,42
Water flow (1) (4)	l/h	225	256	304	353	425	476	535
Pressure Drops (1) (4)	kPa	5	1	11	6	8	5	14
Heating:								
Heating capacity (2) (4)	kW	3,20	3,45	4,19	4,53	5,70	6,35	7,03
Water flow (2) (4)	l/h	275	297	360	390	490	546	605
Pressure drops (2) (4)	kPa	4	1	8	2	6	4	11
Rows:	n°	3	4	3	4	3	4	3
Water connections:								
In/Out	"G	1/2"	1/2"	1/2"	1/2"	1/2"	1/2"	1/2"
Air flow:								
Max	m³/h	240	240	340	340	430	430	540
Med	m³/h	190	190	260	260	340	340	420
Min	m³/h	140	140	170	170	250	250	280
Air Flow (EC version):								
Max	m³/h	---	---	340	340	430	430	540
Min	m³/h	---	---	150	150	180	180	230
Additional Coil:								
Heating capacity (2) (4)	kW	1,50	1,50	2,16	2,16	2,92	2,92	3,75
Water flow (2) (4)	l/h	129	129	186	186	251	251	322
Pressure drops (2) (4)	kPa	5	5	9	9	15	15	26
Rows	n°	1	1	1	1	1	1	1
Water connections	"G	1/2"	1/2"	1/2"	1/2"	1/2"	1/2"	1/2"
Electrical Heater:								
Power supply	V/Ph/Hz	----- 230/1/50 ----->						
Absorbed power	kW	0,6	0,6	1,0	1,0	1,6	1,6	2,0
Electrical Characteristics:								
Power supply	V/Ph/Hz	----- 230/1/50 ----->						
Max absorbed power	kW	0,03	0,03	0,05	0,05	0,05	0,05	0,07
Electrical Characteristics (EC version):								
Power supply	V/Ph/Hz	----- 230/1/50 ----->						
Max absorbed power	kW	---	---	0,02	0,02	0,03	0,03	0,04
Sound Pressure:								
Max (3)	dB(A)	41	41	44	44	40	40	44
Med (3)	dB(A)	34	34	38	38	34	34	37
Min (3)	dB(A)	26	26	26	26	25	25	27
Sound Pressure (EC version):								
Max (3)	dB(A)	---	---	44	44	40	40	44
Min (3)	dB(A)	---	---	25	25	24	24	26
Weights:								
Transport weight	Kg	12	12	14	14	18	19	21
Operating weight	Kg	10	10	12	12	16	17	19
Dimensions:								
Length	mm	440	440	560	560	760	760	960
Width	mm	195	195	195	195	195	195	195
Height	mm	475	475	475	475	475	475	475

NOTES:

- Reference conditions at page 10

Fan Coil units for built-in installation with 3-speed or EC inverter radial fans



TECHNICAL DATA:

MODEL		44	53	54	63	64	73	74
Cooling:								
Total cooling capacity (1) (4)	kW	3,54	4,04	4,58	5,09	5,96	6,45	7,26
Sensible cooling capacity (1) (4)	kW	2,71	3,12	3,47	3,86	4,63	5,07	5,57
Water flow (1) (4)	l/h	609	695	788	875	1025	1109	1249
Pressure Drops (1) (4)	kPa	9	26	17	8	5	16	15
Heating:								
Heating capacity (2) (4)	kW	7,75	9,01	9,93	11,69	13,00	14,59	16,19
Water flow (2) (4)	l/h	666	775	854	1005	1118	1255	1392
Pressure drops (2) (4)	kPa	7	20	13	6	4	12	8
Rows:	n°	4	3	4	3	4	3	4
Water connections:								
In/Out	"G	1/2"	1/2"	1/2"	1/2"	1/2"	1/2"	1/2"
Air flow:								
Max	m³/h	540	690	690	910	910	1180	1180
Med	m³/h	420	530	530	730	730	810	810
Min	m³/h	280	400	400	510	510	590	590
Air Flow (EC version):								
Max	m³/h	540	690	690	910	910	1180	1180
Min	m³/h	230	300	300	420	420	500	500
Additional Coil:								
Heating capacity (2) (4)	kW	3,75	4,65	4,65	6,01	6,01	7,84	7,84
Water flow (2) (4)	l/h	322	400	400	517	517	674	674
Pressure drops (2) (4)	kPa	26	18	18	13	13	24	24
Rows	n°	1	1	1	1	1	1	1
Water connections	"G	1/2"	1/2"	1/2"	1/2"	1/2"	1/2"	1/2"
Electrical Heater:								
Power supply	V/Ph/Hz	←----- 230/1/50 ----->						
Absorbed power	kW	2,0	2,5	2,5	3,0	3,0	4,0	4,0
Electrical Characteristics:								
Power supply	V/Ph/Hz	←----- 230/1/50 ----->						
Max absorbed power	kW	0,07	0,09	0,09	0,16	0,16	0,19	0,19
Electrical Characteristics (EC version):								
Power supply	V/Ph/Hz	←----- 230/1/50 ----->						
Max absorbed power	kW	0,04	0,07	0,07	0,09	0,09	0,13	0,13
Sound Pressure:								
Max (3)	dB(A)	44	46	46	48	48	52	52
Med (3)	dB(A)	37	39	39	43	43	42	42
Min (3)	dB(A)	27	33	33	34	34	34	34
Sound Pressure (EC version):								
Max (3)	dB(A)	44	46	46	48	48	52	52
Min (3)	dB(A)	26	29	29	28	28	33	33
Weights:								
Transport weight	Kg	22	24	25	33	34	42	44
Operating weight	Kg	20	22	23	31	32	40	42
Dimensions:								
Length	mm	960	1160	1160	1135	1135	1410	1410
Width	mm	195	195	195	260	260	260	260
Height	mm	475	475	475	545	545	545	545

HWW/EC 22÷62:


Wall mounted Fan Coil units with EC inverter tangential fan


TECHNICAL DATA:

MODEL		29	33	38	46	58	73
Cooling:							
Total cooling capacity (1) (4)	kW	2,07	2,49	3,02	3,74	4,81	5,38
Sensible cooling capacity (1) (4)	kW	1,52	1,81	2,22	2,74	3,46	3,89
Water flow (1) (4)	l/h	355	427	525	642	826	924
Pressure Drops (1) (4)	kPa	22	28	39	38	45	52
Heating:							
Heating capacity (2) (4)	kW	2,70	3,21	3,93	4,87	6,1	6,85
Water flow (2) (4)	l/h	355	427	525	642	826	924
Pressure drops (2) (4)	kPa	18	23	32	29	34	40
Water connections:							
In/Out	n°	3	4	3	4	3	4
	"G	1/2"	1/2"	1/2"	1/2"	1/2"	1/2"
Air flow:							
Max	m³/h	500	500	645	788	980	1240
Med	m³/h	290	290	370	570	600	600
Min	m³/h	140	140	170	170	250	250
Electrical Heater:							
Power supply	V/Ph/Hz	<----- 230/1/50 ----->					
Absorbed power	kW	0,8	0,8	1,0	1,6	1,6	1,6
Electrical Characteristics:							
Power supply	V/Ph/Hz	<----- 230/1/50 ----->					
Max absorbed power	kW	0,014	0,014	0,020	0,030	0,042	0,060
Sound Pressure:							
Max (3)	dB(A)	37	37	43	46	40	45
Med (3)	dB(A)	26	26	29	34	30	30
Min (3)	dB(A)	14	15	15	16	18	18
Weights:							
Transport weight	Kg	14	15	15	16	18	18
Operating weight	Kg	12	13	13	14	16	16
Dimensions:							
Length	mm	875	875	875	875	1060	1060
Width	mm	220	220	220	220	240	240
Height	mm	300	300	300	300	310	310

NOTES:

- Ambient air temperature 27 °C d.b./19 °C w.b., water temperature 7/12 °C
- Ambient air temperature 20 °C d.b., water temperature 70/60 °C
- Sound pressure level measured at 1 m from the unit with reverberation time 0,5 s
- Performances also valid for EC version
- Maximum operating pressure 1000 kPa.
- Maximum inlet water temperature 90°C
- Inhibited ethylene glycol can be added to the water.

Water Cassette with 3-speed or EC inverter radial fan


TECHNICAL DATA:

MODEL		22	32	42	53	63	73	122
Cooling:								
Total cooling capacity (1) (4)	kW	2,4	3,2	4,1	4,9	6,1	6,9	10,9
Sensible cooling capacity (1) (4)	kW	1,7	2,5	3,0	3,5	4,9	5,1	7,9
Water flow (1) (4)	l/h	413	550	705	843	1049	1187	1875
Pressure Drops (1) (4)	kPa	10	20	28	42	28	39	43
Cooling (EC version):								
Total cooling capacity (1) (4)	kW	---	3,2	---	4,6	---	6,8	10,9
Sensible cooling capacity (1) (4)	kW	---	2,4	---	3,2	---	5,0	7,9
Water flow (1) (4)	l/h	---	550	---	791	---	1170	1875
Pressure Drops (1) (4)	kPa	---	20	---	39	---	39	38
Heating:								
Heating capacity (2) (4)	kW	4,9	6,6	7,8	9,7	11,9	12,7	18,9
Water flow (2) (4)	l/h	422	568	672	834	1023	1090	1624
Pressure drops (2) (4)	kPa	8	17	25	40	24	26	32
Heating (EC version):								
Heating capacity (2) (4)	kW	---	7,1	---	9,2	---	13,4	18,3
Water flow (2) (4)	l/h	---	610	---	791	---	1152	1574
Pressure drops (2) (4)	kPa	---	20	---	34	---	31	25
Water connections:								
In/Out	"G	3/4 "	3/4 "	3/4 "	3/4 "	3/4 "	3/4 "	3/4 "
Air flow:								
Max	m ³ /h	380	580	730	810	1050	1300	2130
Med	m ³ /h	240	290	520	617	820	960	1640
Min	m ³ /h	200	200	450	450	700	700	1380
Air Flow (EC version):								
Max	m ³ /h	---	500	---	810	---	1300	2100
Min	m ³ /h	---	200	---	200	---	360	820
Electrical Heater:								
Power supply	V/Ph/Hz	-----> 230/1/50 <-----						
Absorbed power	kW	1,0	1,0	2,0	2,0	3,0	3,0	4,0
Electrical Characteristics:								
Power supply	V/Ph/Hz	-----> 230/1/50 <-----						
Max absorbed power	kW	0,04	0,06	0,06	0,09	0,11	0,20	0,30
Electrical Characteristics (EC version):								
Power supply	V/Ph/Hz	-----> 230/1/50 <-----						
Max absorbed power	kW	---	0,03	---	0,04	---	0,09	0,20
Sound Pressure:								
Max (3)	dB(A)	39	42	46	48	51	53	55
Med (3)	dB(A)	33	36	40	43	44	48	48
Min (3)	dB(A)	31	31	34	34	39	39	42
Sound Pressure (EC version):								
Max (3)	dB(A)	---	42	---	48	---	53	54
Min (3)	dB(A)	---	29	---	29	---	34	36
Weights:								
Transport weight	Kg	31	31	33	33	40	40	55
Operating weight	Kg	28	28	30	30	36	36	50
Dimensions:								
Length	mm	680	680	680	680	830	830	980
Width	mm	680	680	680	680	830	830	980
Height	mm	250	290	290	290	260	260	290

NOTES:

- Ambient air temperature 27 °C d.b./19 °C w.b., water temperature 7/12 °C
- Ambient air temperature 20 °C d.b., water temperature 70/60 °C
- Sound pressure level measured at 1 m from the unit with reverberation time 0,5 s
- Performances also valid for EC version
- Maximum operating pressure 1000 kPa.
- Maximum inlet water temperature 90°C
- Inhibited ethylene glycol can be added to the water.

Water Cassette with 3-speed or EC inverter radial fan


TECHNICAL DATA:

MODEL		42	53	73	122
Cooling:					
Total cooling capacity (1) (4)	kW	3,1	3,9	5,8	7,9
Sensible cooling capacity (1) (4)	kW	2,4	2,9	4,5	6,0
Water flow (1) (4)	l/h	533	671	998	1359
Pressure Drops (1) (4)	kPa	21	23	46	29
Cooling:					
Total cooling capacity (1) (4)	kW	---	3,8	5,8	7,1
Sensible cooling capacity (1) (4)	kW	---	2,8	4,2	5,2
Water flow (1) (4)	l/h	---	654	998	1221
Pressure Drops (1) (4)	kPa	---	21	52	24
Heating:					
Heating capacity (2) (4)	kW	3,8	4,3	5,0	9,7
Water flow (2) (4)	l/h	326	370	430	834
Pressure drops (2) (4)	kPa	11	12	15	27
Heating (EC version):					
Heating capacity (2) (4)	kW	---	4,3	4,6	9,3
Water flow (2) (4)	l/h	---	370	395	800
Pressure drops (2) (4)	kPa	---	11	14	19
Water connections:					
In/Out	"G	3/4 "	3/4 "	3/4 "	3/4 "
Air flow:					
Max	m ³ /h	730	810	1300	2250
Med	m ³ /h	520	620	960	1970
Min	m ³ /h	450	450	700	1090
Air Flow (EC version):					
Max	m ³ /h	---	810	1300	2100
Min	m ³ /h	---	200	360	820
Electrical Heater:					
Power supply	V/Ph/Hz	---			
Absorbed power	kW	---			
Electrical Characteristics:					
Power supply	V/Ph/Hz	←----- 230/1/50 ----->			
Max absorbed power	kW	0,06	0,09	0,20	0,30
Electrical Characteristics (EC version):					
Power supply	V/Ph/Hz	←----- 230/1/50 ----->			
Max absorbed power	kW	---	0,04	0,09	0,20
Sound Pressure:					
Max (3)	dB(A)	46	48	53	58
Med (3)	dB(A)	40	43	45	53
Min (3)	dB(A)	34	34	39	42
Sound Pressure (EC version):					
Max (3)	dB(A)	---	48	53	55
Min (3)	dB(A)	---	30	34	36
Weights:					
Transport weight	Kg	33	33	40	56
Operating weight	Kg	28	30	36	50
Dimensions:					
Length	mm	680	680	830	980
Width	mm	680	680	830	980
Height	mm	250	290	260	290

NOTES:

- Reference conditions at page 16



Ductable Fan Coil units with 3-speed or EC inverter radial fans

TECHNICAL DATA:

MODEL		8	12	17	19	23	31
Cooling:							
Total cooling capacity (1) (4)	kW	4,6	7,5	9,1	10,5	13,1	15,7
Sensible cooling capacity (1) (4)	kW	3,5	6,0	7,1	8,4	9,8	13,0
Water flow (1) (4)	l/h	791	1290	1565	1806	2253	2700
Pressure Drops (1) (4)	kPa	14	19	21	18	24	24
Heating:							
Heating capacity (2) (4)	kW	9,8	15,5	19,7	21,6	25,9	35,5
Water flow (2) (4)	l/h	843	1333	1694	1858	2227	3053
Pressure drops (2) (4)	kPa	23	17	22	35	25	23
Rows:	n°	3	3	4	3	3	3
Water connections:							
In/Out	"G	3/4"	3/4"	3/4"	3/4"	3/4"	3/4"
Additional Coil:							
Heating capacity (2) (4)	kW	6,8	10,9	11,5	13,5	16,0	20,3
Water flow (2) (4)	l/h	585	937	989	1161	1376	1746
Pressure drops (2) (4)	kPa	10	11	12	15	14	19
Rows	n°	2	2	2	2	2	2
Water connections	"G	3/4"	3/4"	3/4"	3/4"	3/4"	3/4"
Air flow:							
Max	m³/h	1000	1600	1700	2200	2500	3900
Med	m³/h	800	1200	1300	1800	2000	3000
Min	m³/h	600	850	900	900	1300	1900
Air Flow (EC version):							
Max	m³/h	1000	1600	1700	2200	2500	3900
Min	m³/h	530	760	810	810	1140	1700
EH1 Electrical Heater:							
Power supply	V/Ph/Hz	←----- 400/3+N/50 ----->					
Absorbed power	kW	3	4	4	4	6	6
Steps	n°	1	1	1	1	1	1
EH1 Electrical Heater:							
Power supply	V/Ph/Hz	←----- 400/3+N/50 ----->					
Absorbed power	kW	6	8	8	8	12	12
Steps	n°	1	1	1	1	1	1
Electrical Characteristics:							
Power supply	V/Ph/Hz	←----- 230/1/50 ----->					
Max absorbed power	kW	0,13	0,26	0,26	0,52	0,52	0,42
Electrical Characteristics (EC version):							
Power supply	V/Ph/Hz	←----- 230/1/50 ----->					
Max absorbed power	kW	0,13	0,25	0,25	0,45	0,45	0,42
Sound Pressure:							
Max (3)	dB(A)	45	44	45	47	49	51
Med (3)	dB(A)	40	38	39	43	44	45
Min (3)	dB(A)	34	30	31	28	35	35
Sound Pressure (EC version):							
Max (3)	dB(A)	45	44	45	47	49	51
Min (3)	dB(A)	33	29	29	29	34	34
Weights:							
Transport weight	Kg	29	42	44	57	65	67
Operating weight	Kg	27	40	42	55	63	65
Dimensions:							
Length	mm	645	1005	1005	1105	1345	1345
Width	mm	455	455	455	505	540	540
Height	mm	295	295	295	325	325	375

NOTES:

- Ambient air temperature 27 °C d.b./19 °C w.b., water temperature 7/12 °C
- Ambient air temperature 20 °C d.b., water temperature 70/60 °C
- Sound pressure level measured at 1 m from the unit with reverberation time 0,5 s
- Performances also valid for EC version
- Maximum operating pressure 1000 kPa.
- Maximum inlet water temperature 90°C
- Inhibited ethylene glycol can be added to the water.

Ductable Fan Coil units with 3-speed or EC inverter radial fans


TECHNICAL DATA:

MODEL		8	12	17	19	23
Cooling:						
Total cooling capacity (1) (4)	kW	20,7	25,9	31,7	38,1	42,8
Sensible cooling capacity (1) (4)	kW	16,7	20,1	24,6	29,6	33,2
Water flow (1) (4)	l/h	3560	4455	5452	6553	7362
Pressure Drops (1) (4)	kPa	26	29	14	29	26
Heating:						
Heating capacity (2) (4)	kW	46,3	60,1	75,8	91,8	97,1
Water flow (2) (4)	l/h	3982	5169	6519	7895	8351
Pressure drops (2) (4)	kPa	32	34	14	39	34
Rows:	n°	4	3	4	4	4
Water connections:						
In/Out	"G	3/4"	1½"	1½"	1½"	1½"
Additional Coil:						
Heating capacity (2) (4)	kW	22,2	47,4	58,4	64,0	75,1
Water flow (2) (4)	l/h	1909	4076	5022	5504	6459
Pressure drops (2) (4)	kPa	23	10	15	10	14
Rows	n°	2	2	2	2	2
Water connections	"G	3/4"	1¼"	1¼"	1¼"	1¼"
Air flow:						
Max	m³/h	4500	5500	6800	7700	9000
Med	m³/h	3800	---	---	---	---
Min	m³/h	2000	---	---	---	---
Air Flow (EC version):						
Max	m³/h	4500	---	---	---	---
Min	m³/h	1200	---	---	---	---
Eh1 Electrical Heater:						
Power supply	V/Ph/Hz	400/3+N/50				
Absorbed power	kW	6	---	---	---	---
Steps	n°	1	---	---	---	---
Eh1 Electrical Heater:						
Power supply	V/Ph/Hz	400/3+N/50				
Absorbed power	kW	12	---	---	---	---
Steps	n°	1	---	---	---	---
Electrical Characteristics:						
Power supply	V/Ph/Hz	230/1/50	←----- 400/3+N/50 ----->			
Max absorbed power	kW	0,6	0,75	1,10	1,10	1,50
Electrical Characteristics (EC version):						
Power supply	V/Ph/Hz	230/1/50				
Max absorbed power	kW	0,60	---	---	---	---
Sound Pressure:						
Max (3)	dB(A)	55	56	57	57	58
Med (3)	dB(A)	51	---	---	---	---
Min (3)	dB(A)	37	---	---	---	---
Sound Pressure (EC version):						
Max (3)	dB(A)	55	---	---	---	---
Min (3)	dB(A)	35	---	---	---	---
Weights:						
Transport weight	Kg	70	168	168	173	175
Operating weight	Kg	68	166	166	171	173
Dimensions:						
Length	mm	1345	1400	1400	1400	1400
Width	mm	540	800	800	800	800
Height	mm	375	800	800	1050	1050

NOTES:

- Reference conditions at page 18

CONTROL PANELS:

MODELS:

FVW 13÷74 FLOYD- FIW 13÷74 - UTW 63÷544



DBA
On board



DBA
Wall
mounted

Automatic electronic control panel

Electronic control with thermostat and air and water temperature sensor. Applicable to 2-Pipe, 2-Pipe with electrical heater, 4-Pipe systems.

- Mode: Off/Winter/Summer/Auto
- Fan speed: Min/Med/Max/Auto
- Ambient thermostat
- Connection MODBUS for BMS (optional)
- Window/economy contact (optional)
- On/Off valve control

NOTES:

- On FIW 13÷74 and UTW 63÷544 only wall mounted control panel available
- Not compatible with EC versions.

MODELS:

FVW 13÷74 FLOYD- FIW 13÷74 - UTW 63÷544



VB
On board



VR
Wall
mounted

Fan speed control panel

Electronic fan speed control, applicable to 2-Pipe, 2-Pipe with electrical heater and 4-Pipe systems

- Mode: Winter/Off/Summer
- Fan speed: Min/Med/Max

NOTES:

- On FIW 13÷74 and UTW 63÷544 only wall mounted control panel available
- Not compatible with EC versions.

MODELS:

FVW 13÷74 FLOYD- FIW 13÷74 - UTW 63÷544



DBA
On board



DBA
Wall
mounted

Manual electronic control panel

Electronic control with thermostat and air and water temperature sensor. Applicable to 2-Pipe, 2-Pipe with electrical heater, 4-Pipe systems.

- Mode: Winter/Off/Summer
- Fan speed: : Min/Med/Max
- Ambient thermostat
- On/Off valve control

NOTES:

- On FIW 13÷74 and UTW 63÷544 only wall mounted control panel available
- Not compatible with EC versions.

MODELS:

FVW 13÷74 FLOYD- FIW 13÷74 - UTW 63÷544



TA
Wall
mounted

Ambient thermostat

Electromechanic remote ambient thermostat with air temperature sensor. Applicable to 2-Pipe systems.

- Mode: Winter/Summer
- Ambient thermostat
- On/Off valve control

NOTES:

- For wall installation only
- Not compatible with EC versions.

CONTROL PANELS:

MODELS:

HWV/EC 22÷62 - TCW 22÷122 - TCW/EC 32÷122



Infrared remote control, included as standard equipment

Infrared automatic electronic control

Electronic device for remote control with infrared technology, complete with wall support. applicable to 2-Pipe, 2-Pipe with electrical heater, 4-Pipe

- Digital Display
- On/Off switch
- Mode: Summer/Winter/Ventilation only/Auto
- Fan speed: Min/Med/Max/Auto
- Ambient temperature setting
- Deflectors movement setting
- Window/economy contact
- Master/Slave logic ready

MODELS:

FWV 13÷74 FLOYD- FIW 13÷74 - UTW 63÷544



DBE
On board



DRE
Wall mounted

Electromechanic control panel

Electromechanic control with thermostat and air temperature sensor. Applicable to 2-Pipe systems

- Mode: Winter/Off/Summer
- Fan speed: : Min/Med/Max
- Ambient thermostat

NOTES:

- On FIW 13÷74 and UTW 63÷544 only wall mounted control panel available
- Not compatible with EC versions.

MODELS:

FWV 13÷74 FLOYD- FIW 13÷74 - UTW 63÷544



DBV
On board



DRV
Wall mounted

Automatic electronic control panel for EC version

Electronic control with thermostat and air and water temperature sensor. It allows centralized-control of several units (max. 24). Applicable to 2-Pipe, 2-Pipe with electrical heater, 4-Pipe systems.

- Mode: e: Summer/Winter/Ventilation only/Auto (on wall mounted only)
- Fan speed: : Min/Med/Max/Auto
- Ambient thermostat
- Digital display (on wall mounted only)
- Connection MODBUS for BMS (optional)

NOTES:

- On FIW 13÷74 and UTW 63÷544 only wall mounted control panel available

MODELS:

HWV/EC 22÷62 - TCW 22÷122 - TCW/EC 32÷122



DRC
Wall mounted

Automatic electronic control panel

Electronic control for wall installation, allows centralized control of several units (max. 32). Applicable to 2-Pipe, 2-Pipe with electrical heater, 4-Pipe systems.

- Digital Display
- On/Off switch
- Mode: Summer/Winter/Ventilation only/Auto

NOTES:

- For wall installation only.



IKM
HVAC AS

