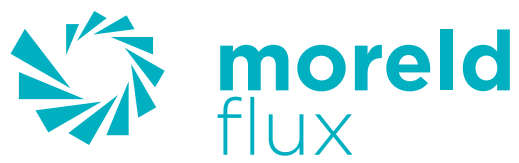


Group 12

PVC - PU Hoses



Page	Contents
2	Index
3	Transparent PVC Industrial Hoses and PVC Air Hoses
5	Vacupress Hoses. Flexible Suction and Pressure Hoses for Food Products and Chemicals
7	Oil Hoses. Vacupress, America blue.
8	Arizona Superelastic, Super Arizona, Arizona Arctic. Powerful Suction and Pressure Hoses.
10	Drain Hoses . Super Jamaica M/L Blue
11	Light Suction and Pressure Hoses for Food and liquid transport. Luisiana, Luisiana Superelastic, Luisiana PU.
12	Light Bulk Hoses for extraction, ventilation, suction and transport of abrasive material. Oregon, Oregon PU,
14	Ventilation Hoses . Superflex PU L / PU R / PU Plus H / PU Plus HMR.
15	Ventilation Hoses KLL 125. Detroit Exhaust Extraction Hose
16	Vacuum Cleaner Hose. Regular and Anti-static.
17	Powerful suction hose for transport of fish and liquid. Shark Hose.



ANTI-STATIC HOSE (THIS LABEL IS NOT ON THE HOSES WITH STEEL SPIRAL)



FOOD INDUSTRY HOSE



HOSE WITH SUPERIOR WEAR RESISTANCE



NON-CONDUCTIVE HOSE

All technical specifications on this chapter are stated at 23°C. All tolerance limits are + / -5%

Other dimensions not listed in the tables may be available upon request.



AIR HOSE "SUPER NOBEL AIR"
20 BAR

CONSTRUCTION:

Inside: Sand-colored smooth PVC
 Reinforcement: Polyester braid
 Covering: Sand-colored PVC
 Description: Very light and flexible air hose. Excellent for air tools, etc.

#	ID		OD mm	WT mm	WT kg/m	WP bar	BP bar	T Temp °C	V %	BR mm	L m
	mm	"									
11024-006	6	1/4"	11	2.5	0.08	20	3:1	-20 / +60	-	22	50
11024-008	8	5/16"	13	2.5	0.10	20	3:1	-20 / +60	-	30	50
11024-010	10	3/8"	16	3	0.14	20	3:1	-20 / +60	-	48	50
11024-013	13	1/2"	19	3	0.20	20	3:1	-20 / +60	-	65	50
11024-016	16	5/8"	23	3	0.28	20	3:1	-20 / +60	-	85	50
11024-019	20	3/4"	27	3.5	0.35	20	3:1	-20 / +60	-	95	50
11024-025	25	1"	34	4.5	0.50	20	3:1	-20 / +60	-	135	50



RAGNO CR
REINFORCED PVC HOSE



CONSTRUCTION:

Inside: Clear PVC
 Reinforcement: Polyester braid
 Covering: Clear PVC
 Description: Food industry approved hose suitable for air, water, gases, oils, cooling fluids and a number of chemicals. See chemical table for full overview. Stated working pressure is at 23°C. Working pressure is decreasing with increasing temperatures.

#	ID		OD mm	WT mm	WT kg/m	WP bar	BP bar	T Temp °C	V %	BR mm	L m
	mm	"									
11045-006	6	1/4"	12	3	0.08	20	60	-20 / +60	-	20	100
11045-008	8	5/16"	14	3	0.13	18	54	-20 / +60	-	30	100
11045-010	10	3/8"	16	3	0.15	18	54	-20 / +60	-	40	100
11045-013	13	1/2"	19	3	0.22	12	36	-20 / +60	-	55	50
11045-016	16	5/8"	22	3	0.30	10	30	-20 / +60	-	110	50
11045-019	19	3/4"	26	3.5	0.36	10	30	-20 / +60	-	115	50
11045-025	25	1"	33	4	0.54	8	24	-20 / +60	-	145	50
11045-032	32	1 1/4"	42	5	0.74	8	24	-20 / +60	-	164	50
11045-038	38	1 1/2"	48	5	0.87	8	24	-20 / +60	-	346	50
11045-050	50	2"	62	6	1.35	8	24	-20 / +60	-	520	25



CLEAR PVC INDUSTRIAL HOSE

CONSTRUCTION:

Inside: Clear PVC
 Reinforcement: None
 Covering: Clear PVC
 Description: Food industry approved hose suitable for air, water, gases, oils and a number of chemicals. See chemical table for a full overview. Stated working pressure is at 23°C. Working pressure is decreasing with increasing temperatures.

#	ID		OD mm	WT mm	WT kg/m	WP bar	BP bar	T Temp °C	V %	BR mm	L m
	mm	"									
10046-003	3	1/8"	6	1.5	0.025	-	-	-20 / +60	-	24	200
10046-005	5	3/16"	8	1.5	0.035	-	-	-20 / +60	-	40	200
10046-006	6	1/4"	9	1.5	0.044	-	-	-20 / +60	-	48	200
10046-008	8	5/16"	12	2	0.05	-	-	-20 / +60	-	64	100
10046-010	10	3/8"	14	2	0.09	-	-	-20 / +60	-	80	100
10046-013	13	1/2"	19	3	0.19	-	-	-20 / +60	-	130	100
10046-016	16	5/8"	22	3	0.22	-	-	-20 / +60	-	160	100
10046-019	20	3/4"	27	3.5	0.32	-	-	-20 / +60	-	200	50
10046-025	25	1"	34	4.5	0.50	-	-	-20 / +60	-	250	50

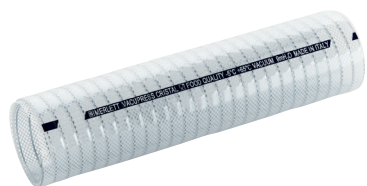


ARMORVIN HNA

CONSTRUCTION:

Inside: Transparent PVC
 Reinforcement: Steel spiral
 Covering: Transparent PVC
 Description: Light suction and pressure hose for the food industry, granule and transport of fluids where a small bend radius is important. Smooth on the inside and outside. Alcohol resistance 2B°. The Armorvin hose series with steel spiral is available in other variants.

#	ID		OD mm	WT mm	WT kg/m	WP bar	BP bar	T Temp °C	V %	BR mm	L m
	mm	"									
42047-010	10	3/8"	3	-	0.16	7	21	-5 / +65	70	20	60
42047-013	12	1/2"	3	-	0.18	7	21	-5 / +65	70	25	60
42047-016	16	5/8"	3.2	-	0.23	6	18	-5 / +65	70	35	60
42047-019	20	3/4"	3.4	-	0.34	5	15	-5 / +65	70	50	60
42047-025	25	1"	4	-	0.51	5	15	-5 / +65	70	60	60
42047-032	32	1 1/4"	4.2	-	0.65	4.5	13.5	-5 / +65	70	75	60
42047-038	38	1 1/2"	4.5	-	0.80	4	12	-5 / +65	70	90	30
42047-050	50	2"	5	-	1.20	3	9	-5 / +65	70	125	30
42047-075	75	3"	6.8	-	2.50	2	6	-5 / +65	70	200	30
42047-100	100	4"	7	-	3.25	2	6	-5 / +65	70	300	30



VACUPRESS CRISTAL

CONSTRUCTION:

Inside: Transparent PVC
 Reinforcement: Polyester braid and steel spiral
 Covering: Transparent PVC
 Description: Flexible and durable hose for suction and pressure. Smooth on the inside and outside. For water, food products and alcohol up to 28%.

#	ID		OD mm	WT mm	WT kg/m	WP bar	BP bar	T Temp °C	V %	BR mm	L m
	mm	"									
42048-019	19	3/4"	28	4.5	0.45	20	60	-5 / +65	90	80	60
42048-025	25	1"	35.5	5.25	0.68	20	60	-5 / +65	90	90	60
42048-032	32	1 1/4"	42.5	5.25	0.80	16	48	-5 / +65	90	110	60
42048-038	38	1 1/2"	51	6.5	1.15	14	42	-5 / +65	90	135	30
42048-050	50	2"	63	6.5	1.60	14	42	-5 / +65	90	170	30
42048-063	63	2 1/2"	77	7	2.55	12	36	-5 / +65	90	210	30
42048-075	76	3"	92	8	2.80	12	36	-5 / +65	90	250	30
42048-100	102	4"	120	8.5	3.90	10	30	-5 / +65	90	400	30

Other dimensions on request



VACUPRESS CHEMI

CONSTRUCTION:

Inside: Black thermoplastic rubber
 Reinforcement: Polyester braid and steel spiral
 Covering: Green thermoplastic rubber
 Description: Flexible and durable hose for suction and pressure. Smooth on the inside and outside. For oils, hydraulic oils and a number of chemicals. Can be cleaned in 110°C for 2 minutes.

#	ID		OD mm	WT mm	WT kg/m	WP bar	BP bar	T Temp °C	V %	BR mm	L m
	mm	"									
42049-019	19	3/4"	28	4.5	0.38	15	45	-25 / +80	90	70	60
42049-025	25	1"	35.5	5.25	0.58	14	42	-25 / +80	90	80	60
42049-032	32	1 1/4"	42.5	5.25	0.70	10	30	-25 / +80	90	90	60
42049-038	38	1 1/2"	50	6	1.20	10	30	-25 / +80	90	100	30
42049-050	50	2"	63	6.5	1.28	10	30	-25 / +80	90	130	30
42049-063	63	2 1/2"	76	6.5	1.60	9	27	-25 / +80	90	180	30
42049-075	76	3"	91	7.5	2.35	8	24	-25 / +80	90	230	30
42049-100	102	4"	119	8.5	3.10	7	21	-25 / +80	90	310	30



VACUPRESS FOOD

CONSTRUCTION:

Inside:

Reinforcement:

Covering:

Description:

White thermoplastic rubber

Polyester braid and steel spiral

Blue thermoplastic rubber

Flexible and durable hose for suction and pressure.

Smooth on the inside and outside. FDA approved.

For milk, dairy products and other food products.

Can be cleaned in 110°C for 2 minutes.

#	ID		OD mm	WT mm	WT kg/m	WP bar	BP bar	T Temp °C	V %	BR mm	L m
	mm	"									
42050-019	19	3/4"	28	4.5	0.38	15	45	-25 / +80	90	70	60
42050-025	25	1"	35.5	5.25	0.58	14	42	-25 / +80	90	80	60
42050-032	32	1 1/4"	42.5	5.25	0.70	10	30	-25 / +80	90	90	60
42050-038	38	1 1/2"	50	6	902	10	30	-25 / +80	90	100	30
42050-050	50	2"	63	6.5	1.28	8	24	-25 / +80	90	130	30
42050-063	63	2 1/2"	76	6.5	1.60	8	24	-25 / +80	90	180	30
42050-075	76	3"	91	7.5	2.35	8	24	-25 / +80	90	230	30
42050-100	102	4"	119	8.5	3.10	7	21	-25 / +80	90	310	30



VACUPRESS SUPERELASTIC

CONSTRUCTION:

Inside:

Reinforcement:

Covering:

Description:

White PVC

Polyester braid and steel spiral

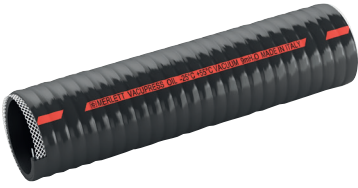
Black PVC

Flexible and durable hose for suction and pressure.

Smooth on the inside and outside.

For water, food products and alcohol up to 28%.

#	ID		OD mm	WT mm	WT kg/m	WP bar	BP bar	T Temp °C	V %	BR mm	L m
	mm	"									
42051-019	19	3/4"	28	4.5	0.48	20	60	-25 / +60	90	70	60
42051-025	25	1"	35.5	5.25	0.68	16	48	-25 / +60	90	80	60
42051-032	32	1 1/4"	42.5	5.25	0.80	16	48	-25 / +60	90	100	60
42051-038	38	1 1/2"	51	6.5	1.20	14	42	-25 / +60	90	125	30
42051-050	50	2"	63	6.5	1.60	12	36	-25 / +60	90	150	30
42051-063	63	2 1/2"	77	7	2.10	12	36	-25 / +60	90	190	30
42051-075	76	3"	92	8	2.85	12	36	-25 / +60	90	190	30
42051-100	102	4"	120	8.5	3.95	10	30	-25 / +60	90	295	30



VACUPRESS
OIL

CONSTRUCTION:

Inside: Black PVC/PU/NR mixture
 Reinforcement: Polyester braid and steel spiral
 Covering: Black PVC/PU/NR mixture
 Description: Flexible and durable hose for suction and pressure. Smooth on the inside and outside. For oils, fuel and hydraulic oils.

#	ID		OD mm	WT mm	WT kg/m	WP bar	BP bar	T Temp °C	V %	BR mm	L m
	mm	"									
42052-019	19	3/4"	28	4.5	0.45	16	48	-25 / +55	90	70	60
42052-025	25	1"	35.5	5.25	0.64	16	48	-25 / +55	90	80	60
42052-032	32	1 1/4"	42.5	5.25	0.80	16	48	-25 / +55	90	100	60
42052-038	38	1 1/2"	51	6.5	1.20	14	42	-25 / +55	90	125	40
42052-050	50	2"	63	6.5	1.75	12	36	-25 / +55	90	150	40
42052-063	63	2 1/2"	77	7	2.05	12	36	-25 / +55	90	190	40



VACUPRESS
OIL PU

CONSTRUCTION:

Inside: Black PVC/PU/NR mixture
 Reinforcement: Galvenised steel spiral with polyester yarn and copper wire
 Covering: Black anti-abrasive PU
 Description: Flexible and durable hose for suction and pressure. For suction and delivery of oils, blue diesel, diesel and bio diesel.

#	ID		OD mm	WT mm	WT kg/m	WP bar	BP bar	T Temp °C	V %	BR mm	L m
	mm	"									
42052-075	76	3"	90.5	7.25	2.7	10	30	-25 / +55	90	210	30
42052-080	80		94.5	7.25	2.8	10	30	-25 / +55	90	220	30
42052-090	90	3 1/2"	106	8	3.25	10	30	-25 / +55	90	250	30
42052-100	102	4"	117.5	7.75	3.7	10	30	-25 / +55	90	300	30
42052-120	120		137	8.5	4.75	8	24	-25 / +55	90	450	20
42052-125	127	5"	144	8.5	5.3	7	21	-25 / +55	90	480	20
42052-150	152	6"	169.5	8.75	6.35	5	15	-25 / +55	90	550	20

AMERICA BLUE OIL

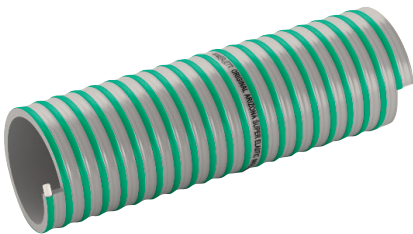


CONSTRUCTION:

Inside: Blue PVC
 Reinforcement: Hardened PVC spiral
 Covering: Blue PVC
 Description: Light suction and pressure hose for transport of oil and petro-chemical products. Available with copper slits for grounding.

# Standard	# Anti-static	ID		OD mm	WT mm	WT kg/m	WP bar	BP bar	T Temp °C	V %	BR mm	L m
		mm	"									
44669-025	44670-025	25	1"	-	3	0.50	6	18	-25 / +55	70	90	30
44669-032	44670-032	32	1.1/4"	-	4.5	0.60	5	15	-25 / +55	70	110	30
44669-038	44670-038	38	1.1/2"	-	4.7	700	5	15	-25 / +55	70	130	30
44669-050	44670-050	51	2"	-	5.5	1.05	4.5	13.5	-25 / +55	70	175	30/50
44669-063	44670-063	63	2.1/2"	-	6	1.39	4.0	12	-25 / +55	70	220	30
44669-075	44670-075	76	3"	-	6.4	1.70	3.5	10.5	-25 / +55	70	270	50
44669-100	44670-100	102	4"	-	7.4	2.70	2.5	7.5	-25 / +55	70	360	30
44669-150	44670-150	152	6"	-	9	4.70	1.5	4.5	-25 / +55	70	540	30

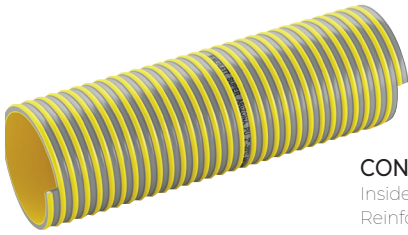
ARIZONA SUPERELASTIC



CONSTRUCTION:

Inside: Grey PVC
 Reinforcement: Hardened green PVC spiral
 Covering: Grey PVC
 Description: Super flexible, powerful suction and pressure hose for septic contractors, agriculture and industry. Green hard coating on the spiral. Smooth on the inside. Available in more dimensions than shown in the table.

#	ID		OD mm	WT mm	WT kg/m	WP bar	BP bar	T Temp °C	V %	BR mm	L m
	mm	"									
44268-025	25	1"	-	4.4	0.50	7	21	-25 / +55	90	100	50
44268-032	32	1.1/4"	-	4.4	0.60	6	18	-25 / +55	90	130	50
44268-038	38	1.1/2"	-	4.4	0.70	6	18	-25 / +55	90	150	50
44268-050	51	2"	-	5.5	1.05	5	15	-25 / +55	90	200	50
44268-063	63	2.1/2"	-	6	1.39	4.5	13.5	-25 / +55	90	250	50
44268-075	76	3"	-	6.5	1.70	4	12	-25 / +55	90	300	30/50
44268-100	102	4"	-	7.3	2.70	3	9	-25 / +55	90	400	30
44268-125	127	5"	-	8.3	3.90	2.5	7.5	-25 / +55	90	510	20
44268-150	152	6"	-	9	5.00	2	6	-25 / +55	90	610	20
44268-200	203	8"	-	13	10.00	1.5	4.5	-25 / +55	90	800	10

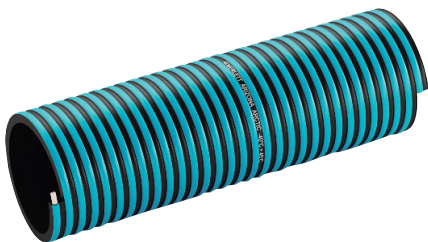


SUPER ARIZONA PU

CONSTRUCTION:

Inside: Grey PVC/PU
 Reinforcement: Hardened yellow PVC spiral
 Covering: Grey PVC/PU
 Description: Super flexible, powerful suction and pressure hose for abrasive materials such as sand, cement, grains and granulates. PU is 5 times more durable than PVC. Yellow hard coating on the spiral. Very smooth on the inside.

#	ID		OD mm	WT mm	WT kg/m	WP bar	BP bar	T Temp °C	V %	BR mm	L m
	mm	"									
44269-032	32	1.1/4"	-	4.4	0.60	6	18	-25 / +55	70	130	50
44269-038	38	1.1/2"	-	4.8	700	6	18	-25 / +55	70	150	50
44269-045	45	1.3/4"	-	5	0.90	5	15	-25 / +55	70	180	50
44269-050	51	2"	-	5	1.05	5	15	-25 / +55	70	200	50
44269-063	63	2.1/2"	-	5.5	1.39	4	12	-25 / +55	70	250	50
44269-075	76	3"	-	6.1	1.70	4	12	-25 / +55	70	300	30/50
44269-090	89	3.1/2"	-	6.7	2.25	3	9	-25 / +55	70	360	30
44269-100	102	4"	-	7.4	2.85	3	9	-25 / +55	70	400	20
44269-125	127	5"	-	8.6	4.10	2.5	7.5	-25 / +55	70	510	20
44269-150	152	6"	-	9.3	5.20	2	6	-25 / +55	70	610	20



ARIZONA ARCTIC
ARIZONA ARCTIC ANTISTATIC

CONSTRUCTION:

Inside: Black PVC
 Reinforcement: Hardened Blue PVC spiral
 Covering: Black PVC
 Description: Soft PVC hose with rigid PVC and copper wire for making the hose antistatic when needed. Suitable for use in particularly cold climates, for suction and delivery of liquids.

# Standard	# Anti-static	ID		OD mm	WT mm	WT kg/m	WP bar	BP bar	T Temp °C	V %	BR mm	L m
		mm	"									
44xxx-050	44xxx-050	51	2"	61.8	5.5	1.05	3.0	9.0	-40 / +45	70	165	30
44xxx-063	44xxx-063	63	2.1/2"	75.5	6	1.39	3.0	9.0	-40 / +45	70	205	30
44xxx-075	44xxx-075	76	3"	89.2	6.5	1.70	3.0	9.0	-40 / +45	70	260	30
44xxx-075	44xxx-075	90	3.1/2"	102.9	7.0	1.70	2.5	7.5	-40 / +45	70	300	30
44xxx-100	44xxx-100	102	4"	117	7.4	2.70	2.0	6.0	-40 / +45	70	330	30
44xxx-150	44xxx-150	127	5"	144	8.5	4.70	1.0	3.0	-40 / +45	70	420	20
44xxx-150	44xxx-150	152	6"	170.4	9.0	4.70	1.0	3.0	-40 / +45	70	510	20



BLUE DRAIN HOSE SUPER JAMAICA L

CONSTRUCTION:

Inside:	Blue PVC
Reinforcement:	Polyester braid
Covering:	Blue PVC
Description:	Light and flexible drain hose, designed for the drain side of bilge pumps and irrigation systems.

#	ID		OD mm	WT mm	WT kg/m	WP bar	BP bar	T Temp °C	V %	BR mm	L m
	mm	"									
11030-025	25	1"	-	-	0.16	8.5	25.5	-10 / +60	-	-	50/100
11030-032	32	1.1/4"	-	-	0.21	8.5	25.5	-10 / +60	-	-	50/100
11030-038	38	1.1/2"	-	-	0.24	8.5	25.5	-10 / +60	-	-	50/100
11030-050	51	2"	-	-	0.32	6.5	19.5	-10 / +60	-	-	50/100
11030-063	63	2.1/2"	-	-	0.42	6.5	19.5	-10 / +60	-	-	50/100
11030-075	76	3"	-	-	0.52	5.5	16.5	-10 / +60	-	-	50/100
11030-100	102	4"	-	-	0.72	5.5	16.5	-10 / +60	-	-	50/100
11030-125	127	5"	-	-	1.13	3	9	-10 / +60	-	-	50/100
11030-150	152	6"	-	-	1.35	3	9	-10 / +60	-	-	50/100
11030-200	204	8"	-	-	2.00	2.5	7	-10 / +60	-	-	50/50



BLUE DRAIN HOSE SUPER JAMAICA M

CONSTRUCTION:

Inside:	Blue PVC
Reinforcement:	Polyester braid
Covering:	Blue PVC
Description:	Light and flexible drain hose, designed for the drain side of bilge pumps and irrigation systems.

#	ID		OD mm	WT mm	WT kg/m	WP bar	BP bar	T Temp °C	V %	BR mm	L m
	mm	"									
11031-025	25	1"	-	-	0.19	10	30	-10 / +60	-	-	50/100
11031-032	32	1.1/4"	-	-	0.24	10	30	-10 / +60	-	-	50/100
11031-038	38	1.1/2"	-	-	0.30	10	30	-10 / +60	-	-	50/100
11031-050	51	2"	-	-	0.41	10	30	-10 / +60	-	-	50/100
11031-063	63	2.1/2"	-	-	0.57	8	24	-10 / +60	-	-	50/100
11031-075	76	3"	-	-	0.70	8	24	-10 / +60	-	-	50/100
11031-100	102	4"	-	-	1.00	8	24	-10 / +60	-	-	50/100
11031-125	127	5"	-	-	1.35	6	18	-10 / +60	-	-	50/100
11031-150	152	6"	-	-	1.60	4	12	-10 / +60	-	-	50/100
11031-200	204	8"	-	-	2.40	3	9	-10 / +60	-	-	50/50



LUISIANA
LUISIANA SUPERELASTIC
LUISIANA PU

CONSTRUCTION:

Inside: Transparent PVC
 Reinforcement: Hardened PVC spiral
 Covering: Transparent PVC. 44466: Yellowish. 44467: Greenish. 44468: Whitish.
 Description: 44466. Light suction and pressure hose for transport of food and liquids. Alcohol resistance 28°. Smooth on the inside. Food industry quality.
 Description: 44467. Light suction and pressure hose for transport of abrasive materials.
 Description: 44468. Light suction and pressure hose for transport of abrasive materials.

#												
Luisiana		ID	OD	WT	WT	WP	BP	T	V	BR	L	
		mm	mm	mm	kg/m	bar	bar	Temp °C	%	mm	m	
44466-025		25	1"	-	3.3	0.33	8	24	-5/+60	70	120	50
44466-032		32	1 1/4"	-	3.6	0.46	7	21	-5/+60	70	150	50
44466-038		38	1 1/2"	-	3.7	0.55	6.5	18	-5/+60	70	170	50
44466-050		50	2"	-	4.1	0.81	6.0	15	-5/+60	70	220	50
44466-063		63	2 1/2"	-	4.0	1.04	5	15	-5/+60	70	290	50
44466-075		75	3"	-	5.2	1.38	4	12	-5/+60	70	350	50
44466-100		102	4"	-	6.2	2.16	4	12	-5/+60	70	480	25
44466-125		127	5"	-	6.8	3.13	3	9	-5/+60	50	730	25
44466-150		152	6"	-	7.4	4.25	3	9	-5/+60	50	810	25
44466-200		203	8"	-	9.1	6.40	2	6	-5/+60	50	900	10

#												
Luisiana Superelastic		ID	OD	WT	WT	WP	BP	T	V	BR	L	
		mm	mm	mm	kg/m	bar	bar	Temp °C	%	mm	m	
44467-025		25	1"	-	3.3	0.33	6.5	21	-25/+55	70	100	50
44467-032		32	1 1/4"	-	3.6	0.46	5.5	18	-25/+55	70	135	50
44467-038		38	1 1/2"	-	3.7	0.55	4.5	15	-25/+55	70	155	50
44467-050		50	2"	-	4.1	0.80	3.5	12	-25/+55	70	200	50
44467-063		63	2 1/2"	-	4.0	1.04	3.5	12	-25/+55	70	260	50
44467-075		75	3"	-	5.2	1.38	2.5	9	-25/+55	70	315	30
44467-100		102	4"	-	6.2	2.16	2.5	9	-25/+55	70	430	25
44467-125		127	5"	-	6.8	3.13	2	7.5	-25/+55	50	670	25
44467-150		152	6"	-	7.4	4.25	2	7.5	-25/+55	50	750	25

#												
Luisiana PU		ID	OD	WT	WT	WP	BP	T	V	BR	L	
		mm	mm	mm	kg/m	bar	bar	Temp °C	%	mm	m	
44468-038		38	1 1/2"	-	3.5	0.50	5	15	-5/+60	55	200	25
44468-045		45	1 3/4"	-	3.5	0.60	4.5	13.5	-5/+60	55	240	25
44468-050		50	2"	-	4.0	0.75	4	12	-5/+60	55	260	25

**CONSTRUCTION:**

Inside:

Reinforcement:

Covering:

Description:

Grey PVC

Hardened PVC spiral

Grey PVC

Light extraction and ventilation hose for wood processing, textile and other industries. Industrial vacuum cleaner hose. Very flexible.

Smooth on the outside and corrugated on the inside.

Self-extinguishing according to UL 94 V2

#	ID		OD mm	WT mm	WT kg/m	WP bar	BP bar	T Temp °C	V %	BR mm	L m
	mm	"									
44161-020	20	3/4"	26	-	0.17	-	-	-10 / +60	50	20	50
44161-025	25	1"	30,6	-	0.19	-	-	-10 / +60	50	25	50
44161-030	30	-	35,6	-	0.23	-	-	-10 / +60	50	30	50
44161-032	32	1 1/4"	38,2	-	0.26	-	-	-10 / +60	50	32	50
44161-035	35	-	41,4	-	0.30	-	-	-10 / +60	50	35	50
44161-038	38	1 1/2"	44,4	-	0.31	-	-	-10 / +60	50	38	50
44161-040	40	-	46,6	-	0.33	-	-	-10 / +60	40	40	50
44161-045	45	1 3/4"	51,6	-	0.37	-	-	-10 / +60	40	45	50
44161-050	50	2"	57,4	-	0.44	-	-	-10 / +60	40	50	50
44161-060	60	-	68	-	0.56	-	-	-10 / +60	40	60	50
44161-063	63	2 1/2"	71,5	-	0.60	-	-	-10 / +60	40	63	50
44161-070	70	-	78,2	-	0.64	-	-	-10 / +60	40	70	50
44161-075	76	3"	80,9	-	0.73	-	-	-10 / +60	40	75	50
44161-080	80	-	89,6	-	0.79	-	-	-10 / +60	40	80	30
44161-090	90	3 1/2"	100,2	-	0.95	-	-	-10 / +60	40	90	30
44161-100	102	4"	111	-	0.98	-	-	-10 / +60	40	100	30
44161-110	110	-	120	-	1.12	-	-	-10 / +60	40	110	30
44161-120	120	-	131	-	1.30	-	-	-10 / +60	40	120	30
44161-125	127	5"	138	-	1.36	-	-	-10 / +60	40	125	30
44161-130	130	-	141,4	-	1.44	-	-	-10 / +60	40	130	30
44161-140	140	-	152,5	-	1.60	-	-	-10 / +60	40	140	30
44161-150	152	6"	165,4	-	1.76	-	-	-10 / +60	40	150	30
44161-160	160	-	173	-	1.93	-	-	-10 / +60	40	160	20
44161-180	180	-	194	-	2.30	-	-	-10 / +60	40	180	20
44161-200	200	8"	214	-	2.65	-	-	-10 / +60	40	200	20
44161-250	250	10"	266,2	-	3.60	-	-	-10 / +60	40	250	15
44161-300	305	12"	320	-	4.50	-	-	-10 / +60	40	300	10



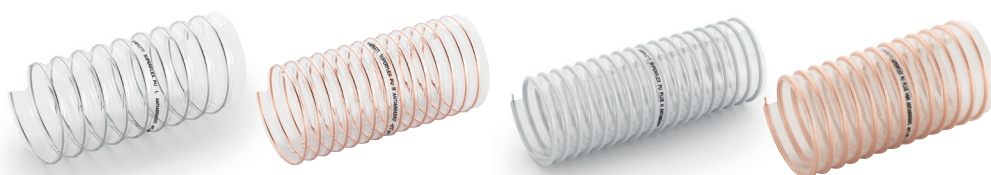
OREGON PU
OREGON PU ANTI-STATIC

CONSTRUCTION:

Inside: Transparent PU
 Reinforcement: Hardened PVC spiral
 Covering: Transparent PU
 Safety factor: -25 / +85
 Temperature °C: Flexible and light hose for suction and transport of abrasive materials, as well as for the fish industry where there is a limited need for pressure and vacuum. The hose is very smooth on the inside and corrugated on the outside. Food industry quality. Chemical, moisture- and microbe resistant. PU is 7-8 times more durable than PVC.
 Description: Self-extinguishing according to UL 94 V2

Transparent PU
 Hardened PVC spiral
 Transparent PU
 -25 / +85
 Flexible and light hose for suction and transport of abrasive materials, as well as for the fish industry where there is a limited need for pressure and vacuum. The hose is very smooth on the inside and corrugated on the outside. Food industry quality. Chemical, moisture- and microbe resistant. PU is 7-8 times more durable than PVC.
 Self-extinguishing according to UL 94 V2

#	# Anti-static	ID		OD mm	WT kg/m	WT kg/m	WP bar	V %	BR mm	L m
		mm	"							
44162-025	44163-025	25	1"	-	0.15	0.19	-	40	25	20
44162-030	44163-030	30	-	-	0.16	0.21	-	40	30	20
44162-032	44163-032	32	1 1/4"	-	0.18	0.24	-	40	32	20
44162-035	44163-035	35	-	-	0.20	0.25	-	40	35	20
44162-038	44163-038	38	1 1/2"	-	0.25	0.31	-	30	38	20
44162-040	44163-040	40	-	-	0.28	0.33	-	30	40	20
44162-045	44163-045	45	1 3/4"	-	0.32	0.37	-	30	45	20
44162-050	44163-050	50	2"	-	0.39	0.44	-	30	50	20
44162-060	44163-060	60	-	-	0.44	0.50	-	30	60	20
44162-063	44163-063	63	2 1/2"	-	0.47	0.53	-	30	63	20
44162-070	44163-070	70	-	-	0.60	0.66	-	30	70	20
44162-075	44163-075	75	3"	-	0.60	0.66	-	30	75	20
44162-080	44163-080	80	-	-	0.62	0.68	-	30	80	20
44162-090	44163-090	90	3 1/2"	-	0.75	0.81	-	30	90	20
44162-100	44163-100	100	4"	-	0.85	0.92	-	30	100	20
44162-110	44163-110	110	-	-	1.05	1.12	-	30	110	20
44162-120	44163-120	120	-	-	1.10	1.18	-	30	120	20
44162-125	44163-125	125	5"	-	1.17	1.25	-	30	125	20
44162-130	44163-130	130	-	-	1.28	1.35	-	30	130	20
44162-140	44163-140	140	-	-	1.40	1.50	-	30	140	20
44162-150	44163-150	150	6"	-	1.45	1.60	-	30	150	20
44162-160	44163-160	160	-	-	1.70	1.78	-	30	160	20
44162-180	44163-180	180	-	-	2.00	2.10	-	30	180	10
44162-200	44163-200	200	8"	-	2.18	2.28	-	30	200	10
44162-250	-	250	10"	-	2.96	-	-	30	250	10
44162-300	-	300	12"	-	3.70	-	-	30	300	10



SUPERFLEX PU L
PU R
PU PLUS H
PU PLUS HMR

CONSTRUCTION:

Inside: Transparent PU
Reinforcement: Steel spiral
Covering: Transparent PU
Safety factor:
Temperature °C: -40 / +90 (125 for shorter periods)





Part No. for PU L :42340- dim.
Part No. for PU R :42341- dim.
Part No. for PU PLUS H :42342- dim.
Part No. for PU PLUS HM/R :42343- dim.

DESCRIPTION:

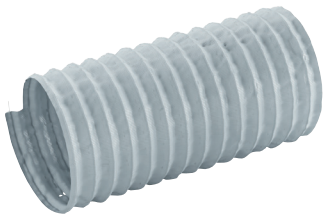
Very flexible and durable suction and ventilation hose for wood processing, textile and other industry where wear resistance and flexibility is important.

The hose is available in 4 versions:

PU L 0.4-0.6 mm wall thickness
PU R 0.5-0.8 mm wall thickness
PU PLUS H 1.0-1.1 mm wall thickness
PU PLUS HM/R 1.3-1.6 mm wall thickness

#																
	gr./mtr.				gr./mtr.				%				mm			
	PU L	PU R	PU H	PU HM	PU L	PU R	PU H	PU HM	PU L	PU R	PU H	PU HM	PU L	PU R	PU H	PU HM
-030	130	-	-	-	0.60	-	-	-	30	-	-	-	7	-	-	-
-038	140	166	480	500	0.55	1.50	2.80	2.70	28	48	75	80	8	38	75	75
-040	150	180	520	550	0.50	1.40	2.60	2.60	25	45	70	75	10	40	80	80
-045	170	200	570	600	0.48	1.30	2.30	2.40	23	40	65	65	12	45	90	90
-050	185	260	630	670	0.45	1.20	2.00	2.20	20	35	60	60	13	50	100	100
-060	220	300	740	770	0.40	1.00	1.80	1.80	16	30	50	50	15	60	120	120
-063	230	320	770	850	0.38	0.90	1.60	1.70	15	25	50	50	16	63	125	130
-070	330	420	880	950	0.35	0.80	1.50	1.60	14	25	45	48	18	70	140	140
-075	350	440	940	1050	0.30	0.80	1.30	1.50	10	20	40	45	19	75	150	150
-080	370	480	1000	1100	0.27	0.70	1.20	1.40	10	20	40	42	20	80	160	160
-090	420	520	1100	1200	0.23	0.70	1.10	1.20	10	20	35	40	22	90	180	180
-100	480	660	1250	1350	0.20	0.60	1.00	1.10	0.9	15	30	35	20	100	200	200
-110	520	720	-	-	0.20	0.60	-	-	0.9	15	-	-	22	110	-	-
-120	550	780	1480	1630	0.19	0.50	0.80	0.90	0.9	15	25	30	24	120	240	240
-125	590	800	1580	1800	0.19	0.50	0.80	0.90	0.8	15	25	25	25	125	250	250
-130	610	840	1630	1800	0.18	0.50	0.80	0.80	0.8	15	25	25	26	130	260	260
-140	660	900	1750	2000	0.15	0.50	0.70	0.80	0.8	15	20	25	28	140	280	280
-150	700	1100	1840	2150	0.11	0.40	0.70	0.80	0.6	10	20	22	30	150	300	300
-160	750	1160	-	-	0.10	0.40	-	-	0.6	10	-	-	32	160	-	-
-170	780	1240	-	-	0.09	0.40	-	-	0.6	10	-	-	34	170	-	-
-180	830	1300	-	-	0.09	0.40	-	-	0.6	10	-	-	36	180	-	-
-200	920	1440	2500	3300	0.08	0.30	0.50	0.60	0.5	10	15	18	40	200	400	400
-220	1070	1580	-	-	0.07	0.30	-	-	0.5	5	-	-	45	220	-	-
-250	1250	1880	3800	3700	0.05	0.20	0.40	0.50	0.4	5	10	12	50	250	500	500
-300	1500	2250	4500	4900	0.03	0.20	0.30	0.40	0.3	4	10	12	60	300	600	600
-350	1750	-	-	-	0.02	-	-	-	0.3	-	-	-	70	-	-	-
-400	2000	-	-	-	0.02	-	-	-	0.2	-	-	-	80	-	-	-
-450	2300	-	-	-	0.01	-	-	-	0.1	-	-	-	90	-	-	-
-500	2500	-	-	-	0.01	-	-	-	0.1	-	-	-	100	-	-	-
-600	3000	-	-	-	0.01	-	-	-	0.1	-	-	-	120	-	-	-

VENTILATION HOSE KLL 125



Construction: Those made of polyester textile covered with PVC with galvanised steel spiral between two layers of tissue
 Applications: For air-conditioning, suction of fumes and warm air.
 Temperature range for short periods up to -20°C +110°C.

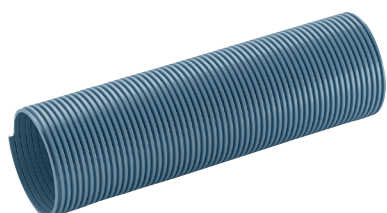
#	ID		OD mm	WT mm	WT kg/m	WP bar	BP bar	T Temp °C	V %	BR mm	L m
	mm	"									
42077-050	51	2"	54	0.22	0.10	0,5	-	-5/+80	9.5	25	12
42077-063	63	2.1/2"	66	0.22	0.13	0,45	-	-5/+80	9.0	31	12
42077-075	76	3"	79	0.22	0.15	0,4	-	-5/+80	8.0	36	12
42077-082	82	3.1/4"	85	0.22	0.17	0,38	-	-5/+80	7.5	41	12
42077-089	89	3.1/2"	92	0.22	0.18	0,3	-	-5/+80	7.0	44	12
42077-100	102	4"	105	0.22	0.22	0,25	-	-5/+80	6.5	51	12
42077-114	114	4.1/4"	117	0.22	0.24	0,21	-	-5/+80	5.5	57	12
42077-125	127	5"	130	0.22	0.27	0,18	-	-5/+80	4.5	63	12
42077-140	140	5.1/2"	143	0.22	0.29	0,15	-	-5/+80	3.8	70	12
42077-150	152	6"	156	0.22	0.38	0,14	-	-5/+80	3.5	76	12
42077-163	165	6.1/2"	169	0.22	0.42	0,12	-	-5/+80	3.0	82	12
42077-178	178	7"	182	0.22	0.45	0,1	-	-5/+80	2.5	89	12
42077-200	203	8"	207	0.22	0.51	0,08	-	-5/+80	2.0	101	12
42077-225	228	9"	232	0.22	0.57	0,06	-	-5/+80	1.5	114	12
42077-250	254	10"	258	0.22	0.64	0,05	-	-5/+80	1.2	127	12
42077-300	304	12"	308	0.22	0.77	0,03	-	-5/+80	0.5	152	12
42077-350	355	14"	359	0.22	0.89	0,02	-	-5/+80	0.2	177	12
42077-400	406	16"	410	0.22	1.03	0,02	-	-5/+80	0.1	203	12
42077-450	457	18"	462	0.22	1.30	0,01	-	-5/+80	0	228	12
42077-500	508	20"	513	0.22	1.45	0,01	-	-5/+80	0	254	12
42077-550	558	22"	563	0.22	1.58	0,01	-	-5/+80	0	279	12

EXHAUST EXTRACTION HOSE "DETROIT"



Construction: Thermoplastic rubber hose with spiral that won't break when driven over.
 Applications: Exhaust and waste gas hose ideal for use on reels. Very light and flexible hose. Resistant to short periods of up to 170°C.

#	ID		OD mm	WT mm	WT kg/m	WP bar	BP bar	T Temp °C	V %	BR mm	L m
	mm	"									
44092-050	50	2"	68	0.8	0.52	-	-	-40/+150	50	120	30
44092-060	60	-	80	0.8	0.63	-	-	-40/+150	35	150	30
44092-075	75	3"	93	0.8	0.75	-	-	-40/+150	15	180	30
44092-100	100	4"	120	0.8	1.00	-	-	-40/+150	10	230	30
44092-125	125	5"	145	0.8	1.25	-	-	-40/+150	8	280	30
44092-150	150	6"	172	0.8	1.50	-	-	-40/+150	6	330	30
44092-200	200	8"	224	0.8	1.95	-	-	-40/+150	5	440	20



VACUUM CLEANER HOSE "EVA INDUSTRIAL"

CONSTRUCTION:

Inside: Grey non-spiral EVA (ethyl vinyl acetate) hose that won't break when driven over. Relatively smooth inside and corrugated on the outside.

Applications: Resistant to very rough treatment, and is ideal for use as a point suction hose for welding fumes, vacuum cleaner hose for household and industrial vacuum cleaners, suction hose for water vacuums, etc.

#	ID		OD mm	WT mm	WT kg/m	WP bar	BP bar	T Temp °C	V %	BR mm	L m
	mm	"									
40920-025	25	1"	33	4	0.20	-	-	-30 / +60	50	66	30
40920-029	29	-	36	3.5	0.22	-	-	-30 / +60	50	76	30
40920-032	32	1 1/4"	41	4.5	0.27	-	-	-30 / +60	50	82	30
40920-038	38	1 1/2"	48	5	0.36	-	-	-30 / +60	50	93	30
40920-045	45	1 3/4"	55	5	4.07	-	-	-30 / +60	50	111	30
40920-050	50	2"	61	5.5	0.56	-	-	-30 / +60	50	122	30
40920-060	60	-	72	6	0.70	-	-	-30 / +60	40	146	30
40920-075	75	3"	88	6.5	0.92	-	-	-30 / +60	40	155	15
40920-080	80	-	94	7	1.00	-	-	-30 / +60	40	170	15



VACUUM CLEANER HOSE FLEXOCOND

CONSTRUCTION:

Inside: Conductive POLYETHYLENE and ELASTOMER spiral hose, with reinforcement on the external spiral.

Applications: Resistant to very rough treatment, and is ideal for use as a point suction hose for welding fumes, vacuum cleaner hose for household and industrial vacuum cleaners, suction hose for water vacuums, etc.

#	ID		OD mm	WT mm	WT kg/m	WP bar	BP bar	T Temp °C	V %	BR mm	L m
	mm	"									
40930-025	25	1"	32.4	4	0.16	-	-	-20 / +60	80	38	30
40930-032	32	1 1/4"	40.4	4.5	0.22	-	-	-20 / +60	80	63	30
40930-038	38	1 1/2"	48	4.8	0.30	-	-	-20 / +60	70	70	30
40930-045	45	1 3/4"	55	5.0	0.35	-	-	-20 / +60	-	-	30
40930-050	50	2"	60.5	5.2	0.40	-	-	-20 / +60	60	80	30
40930-075	76	3"	87.5	5.5	0.75	-	-	-20 / +60	40	200	15

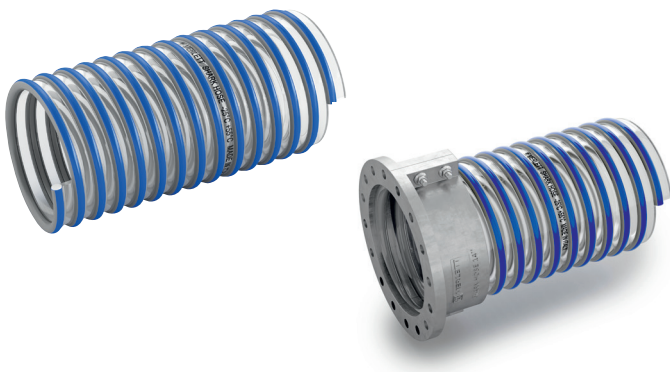
VACUUM CLEANER HOSE DRAGON TAIL



Construction: Polyethylene on the outside and inside. Black and yellow covering reinforced with black durable spiral.

Applications: Very lightweight and flexible suction hose. For suction of liquids in the portable sanitation industry. It is supplied with cuffs with high resistance in long-lasting applications and also waterproof. Resistant to organic and alkaline liquids, some acids and oil products.

#	ID		OD mm	WT mm	WT kg/m	WP bar	BP bar	T Temp °C	V %	BR mm	L m
	mm	"									
44640-038	38	1 1/2"	50	6.0	0.48	-	-	-10 / +70	85	90	30
44640-050	51	2"	64.5	7.0	0.66	-	-	-10 / +70	85	120	30
44640-075	76	3"	92	8.0	0.97	-	-	-10 / +70	85	190	30
44640-100	102	4"	122	10.0	1.91	-	-	-10 / +70	85	250	30



PVC SUCTION HOSE "SHARK HOSE"

Construction: Transparent PVC on the inside and outside. Reinforced with blue hardened PVC spiral.

Applications: Very powerful suction hose for transport of fish and liquids. Smooth on the inside.

#	ID		OD mm	WT mm	WT kg/m	WP bar	BP bar	T Temp °C	V %	BR mm	L m
	mm	"									
44468-100	102	4"	-	10	2.90	2.5	3:1	-25 / +55	100	200	10
44468-125	127	5"	-	11	3.60	2.5	3:1	-25 / +55	95	300	10
44468-150	152	6"	-	11.5	5.60	2	3:1	-25 / +55	95	350	10
44468-200	203	8"	-	13.5	9.20	2	3:1	-25 / +55	95	600	10
44468-250	254	10"	-	18	14.50	1.5	3:1	-25 / +55	95	1000	10
44468-300	304	12"	-	20	19.00	1.5	3:1	-25 / +55	95	1500	10
44468-350	355	14"	-	20	22.00	1.25	3:1	-25 / +55	90	2200	13.5
44468-400	407	16"	-	21.5	28.00	1	3:1	-25 / +55	90	3000	12

