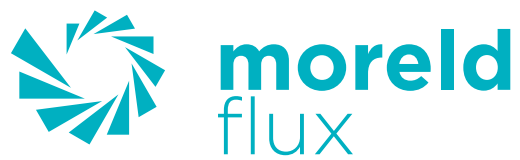
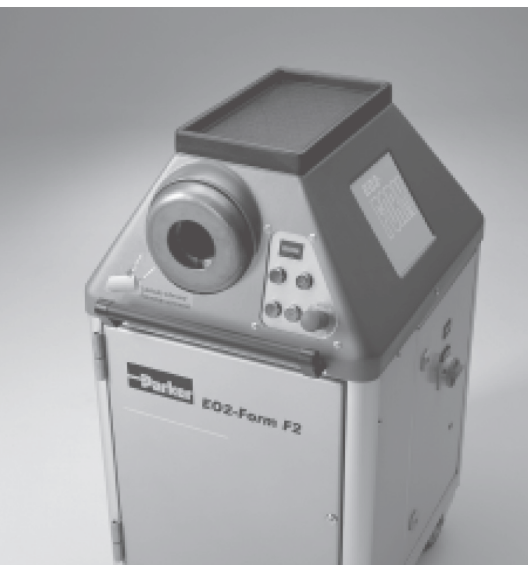
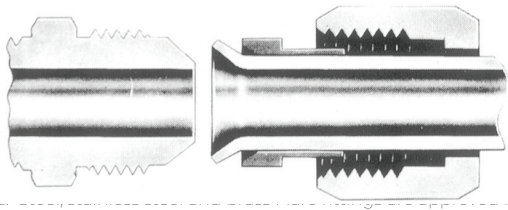


Group 19

Machines and Tools



Page	Contents
2	Index
3	Flare Fittings - Flaring Machines
4	Hand-operated Swaging Machines
4-5	Portable Swaging Machines
5-6	Small Swaging Machines
7-8	Large Swaging Machines
9	Accessories for Swaging Machines
10	Pressure Testing Benches
11-12	Cutting Machines
13	Skiving and Marking Equipment
14	Hose Reels, Hose Reel Carousel, Pushers



DNV (Det Norske Veritas) for use in hydraulic systems. Lloyds Register of Shipping, US Coast Guard and U.S. Military Standard have also approved Flare Fittings.

FLARE FITTINGS Hydraulic Fittings Flaring Machines



1040 - PARFLANGE MACHINE FOR 37° AND 90° TUBE FLARING

Electric/hydraulic operated, fully automatic orbital flaring machine for JIC 37° and ORFS 90° tube flaring.

Tube dimension: 6x1mm - 38x5mm
Voltage: 220/380V/50Hz - 20/16 A - 4 kW
External dim.: 705 x 805 x 1020mm
Weight: 400 kg.

Tools:
M40 - Clamping dies pr. tube O.D and flaring type
B30 - Flaring/flanging pin pr. tube O.D. x I.D. and flaring type

Use separate tools for stainless steel pipes



1025 - PARFLANGE MACHINE FOR 37° AND 90° TUBE FLARING

Electric/hydraulic operated orbital flaring machine for JIC 37° and ORFS 90° tube flaring. 1025 is a compact and portable machine.

Tube dimension: 6 - 38 mm
Voltage: 220V/50Hz 1 Phase
380V/50Hz 3 Phase
External dim.: 600 x 250 x 500
Weight: 80 kg

Tools:
M40 - Clamping dies pr. tube O.D and flaring type
B30 - Flaring/flanging pin pr. tube O.D. x I.D. and flaring type

Use separate tools for stainless steel pipes



FLARING MACHINE MODEL 1015-A

Hand pump operated

Capacity: Pipe O.D 6 mm to 38 mm
Pipe O.D 1/4" to 1 1/2"

Dimensions: L=600 x W=250 x H=350
Weight: 35 kg

FLARING DIE SET FOR FLARING MACHINE 1015A

Tube O.D. mm	Part No. mm	Tube O.D. inch	Part No. inch
6	M157406-1	1/4	M047415-1
8	M157408-1	5/16	M157408-1
10	M157410-1	3/8	M067415-1
12	M157412	1/2	M087415
14	M157414		
15	M157415		
16	M157416	5/8	M107415
18	M157418		
20	M157420	3/4	M127415
25	M157425	1	M167415
30	M157430		
32	M157432	1 1/4	M207415
38	M157438	1 1/2	M157438

Other machines available on request.

All Techmaflex swaging machines are priced and delivered without die set which must be ordered separately.



Hand-operated Swaging Machine H CRIMP 80 (PM 18)

TECHNICAL SPECIFICATIONS:

Weight:	28 kg
Hose Dimension:	1" 2SN
Swage Force:	80 tons
Opening w/ Dies:	20 mm
Max Opening:	59 mm
Swage Range:	4-43 mm
Die Sizes*:	12 15 18 21 27 30 39

* 1" 2 layer hose is swaged with the master die size 39 mm
Two-way pump

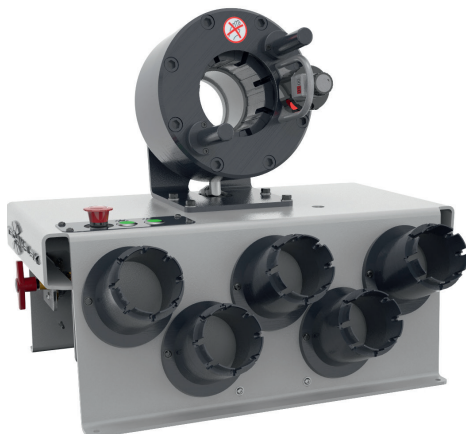


Hand-operated Swaging Machine H CRIMP 137 (PMH 28)

TECHNICAL SPECIFICATIONS:

Hose Dimension:	1.1/4" 4SP
Swage Force:	137 tons
Opening w/ Dies:	28 mm
Max Opening:	100 mm
Swage Range:	4-70 mm
Die Sizes:	15 21 27 33 39 45

Two-way pump
Micrometer with sound signal.



Portable Swaging Machine V CRIMP 137 (PE 28)

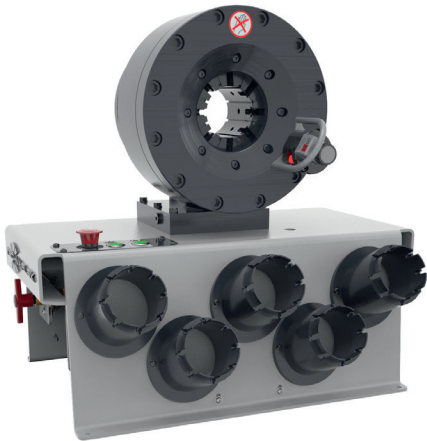
TECHNICAL SPECIFICATIONS:

Weight:	90 kg
Hose Dimension:	1.1/4" 4SP
Standard Engine:	2 kW / 12V DC / 24V DC
Swage Force:	137 tons
Opening w/ Dies:	28 mm
Max Opening:	100 mm
Swage Range:	4-70 mm
Die Sizes:	15 18 21 27 33 39

Pistol grip for quick change
of dies on request.



All Techmaflex swaging machines are priced and delivered without die set which must be ordered separately.

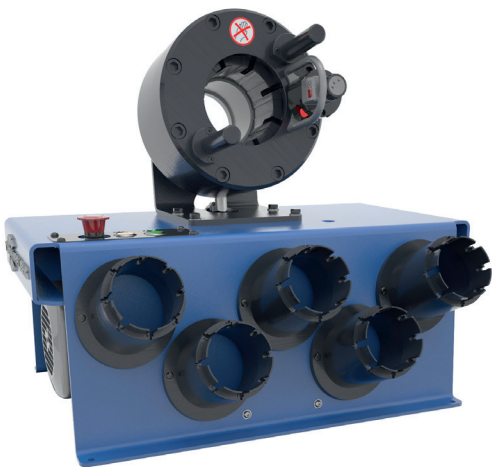


**Portable Swaging Machine
V CRIMP 240 (PE 38)**

TECHNICAL SPECIFICATIONS:

Weight:	130 kg
Hose Dimension:	2" 4SP
Standard Engine:	2 kW / 12V DC / 24V DC
Swage Force:	240 tons
Opening w/ Dies:	38 mm
Max Opening:	118 mm
Swage Range:	4-76 mm
Die Sizes:	15 18 21 27 33 39 45 51 57 66

Pistol grip for quick change of dies on request.



**Swaging Machine
S CRIMP 137 (SE 28)**

TECHNICAL SPECIFICATIONS:

Hose Dimension:	1" 1/4 4SP
Standard Engine:	2.2 kW / 220V 1 or 3 ph
Swage Force:	137 tons
Opening w/ Dies:	28 mm
Max Opening:	100 mm
Swage Range:	4-70 mm
Die Sizes:	15 21 27 33 39

Pistol grip for quick change of dies on request.



**Swaging Machine
S CRIMP 240 (PE 38)**

TECHNICAL SPECIFICATIONS:

Hose Dimension:	2" 4SP
Standard Engine:	4 kW / 230-400V 3 ph
Alternative Engine:	2.2 kW / 220V 1ph
Swage Force:	240 tons
Opening w/ Dies:	38 mm
Max Opening:	118 mm
Swage Range:	4-76 mm
Die Sizes:	15 18 21 27 33 39 45 51 57 66

Pistol grip for quick change of dies on request.



All Techmaflex swaging machines are priced and delivered without die set which must be ordered separately.



Swaging Machine S CRIMP 350 / 350L (PE 58)

TECHNICAL SPECIFICATIONS:

Hose Dimension:	2" 6SP / 4" Industrial Hoses
Standard Engine:	5.5 kW (350)-4.0kw (350L) / 230-400V 3 ph
Swage Force:	350 tons
Opening w/ Dies:	54 mm
Max Opening:	180 mm
Swage Range:	4-130 mm
Die Sizes:	15 18 21 27 33 39 45 51 57 66 73
	Larger die set on request.

Pistol grip for quick change of dies on request.



Swaging Machine PES 50

TECHNICAL SPECIFICATIONS:

Hose Dimension:	1" 1/4
Standard Engine:	5.5 kW / 230-400V 3 ph
Swage Force:	240 tons
Opening w/ Dies:	+54 mm
Max Opening:	180 mm
Swage Range:	4-70 mm
Standard Die Length:	115 mm
Die Sizes:	15 18 21 27 33 39 45 51 57 66

Pistol grip for quick change of dies on request.



Swaging Machine P CRIMP 320 (PES 100)

TECHNICAL SPECIFICATIONS:

Hose Dimension:	2" R13 / 4" Industrial Hoses
Standard Engine:	5.5 kW / 230-400V 3 ph
Swage Force:	320 tons
Opening w/ Dies:	80 mm
Max Opening:	207 mm
Swage Range:	4-130 mm
Master Die Length:	100 mm
Die Sizes:	15 18 21 27 33 39 45 51 57 66
	Up to 122 mm on request.

Pistol grip for quick change of dies on request.



All Technaflex swaging machines are priced and delivered without die set which must be ordered separately.



Swaging Machine P CRIMP 480 (PES 125)

TECHNICAL SPECIFICATIONS:

Hose Dimension:	3" 6SP/ 5" with special dies
Standard Engine:	5.5 kW / 230-400V 3 ph
Swage Force:	480 tons
Opening w/ Dies:	85 mm
Max Opening:	212 mm
Swage Range:	4-160 mm
Master Die Length:	125 mm
Die Sizes:	15 18 21 27 33 39 45 51 57 66 73
Up to 122 mm on request.	

Pistol grip for quick change of dies on request.

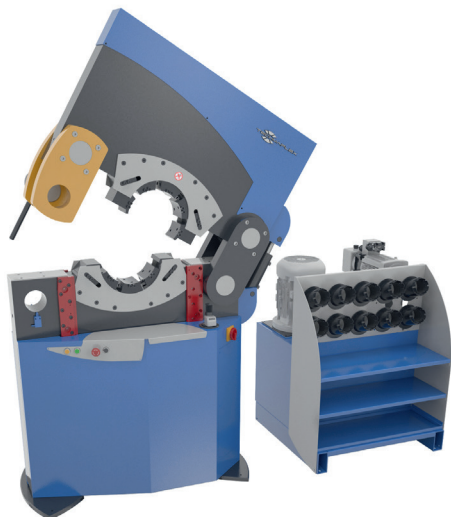


Swaging Machine PE 350

TECHNICAL SPECIFICATIONS:

Hose Dimension:	8"
Standard Engine:	5.5 kW / 230-400V 3 ph
Swage Force:	400 tons
Opening w/ Dies:	125 mm
Max Opening:	350 mm
Swage Range:	Up to 300 mm
Standard Die Length:	130 mm
Die Sizes:	Made to measure

Pistol grip for quick change of small die sets on request.



Swaging Machine XL CRIMP 320 (PESO 320)

TECHNICAL SPECIFICATIONS:

Hose Dimension:	6"
Standard Engine:	5.5 kW / 230-400V 3 ph
Swage Force:	320 tons
Opening w/ Dies:	55 mm
Max Opening:	260 mm
Swage Range:	Up to 230 mm
Standard Die Length:	125 mm
Die Sizes:	Made to measure

Opening and closing of the crimp head through hydraulic cylinder. The machine power pack is separate for easier access to the head. Pistol grip for quick change of small die sets on request.



All Technaflex swaging machines are priced and delivered without die set which must be ordered separately.

Swaging Machine XL CRIMP 400 (PES 280)

TECHNICAL SPECIFICATIONS:

Hose Dimensions:	6" industrial
Standard Engine:	5.5 kW / 230-400V 3 ph
Swage Force:	400 tons
Opening w/ Dies:	+50 mm
Max Opening:	285 mm
Master Die Length:	150 mm
Die Sizes:	Made to measure
Crimp range:	4-210 mm

Pistol grip for quick change of dies on request.



Swaging Machine XL CRIMP 550 (PES 500)

TECHNICAL SPECIFICATIONS:

Hose Dimensions:	12"
Standard Engine:	5.5 kW / 230-400V 3 ph
Swage Force:	550 tons
Opening w/ Dies:	+130 mm
Max Opening:	490 mm
Master Die Length:	200 mm
Die Sizes:	Made to measure
Max crimp Ø:	390 mm

Pistol grip for quick change of dies on request.



All Technaflex swaging machines are priced and delivered without die set which must be ordered separately.

Pedal - CME

TECHNICAL SPECIFICATIONS:

Available for:

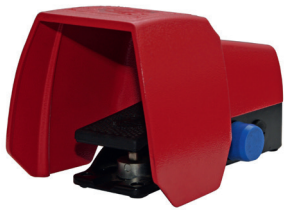
S CRIMP 137, 240, 350

P CRIMP 320, 480

XL CRIMP 400, 320, 550

Cable length: 1.7m

Also available in pair: one to swag and one to open.



ISD

TECHNICAL SPECIFICATIONS:

Allows automatic die selection, semi-automatic opening and preventive maintenance alerts. Via USB you can upload and download crimping charts and machine data.



SMART CONTROL PANEL

TECHNICAL SPECIFICATIONS:

Electronic device to manage the hose crimping operation. The SCP is a great tool for hose assemblies in series with the daily counter and adjustments of opening.



Hydro-pneumatic Pump for Swaging Machines

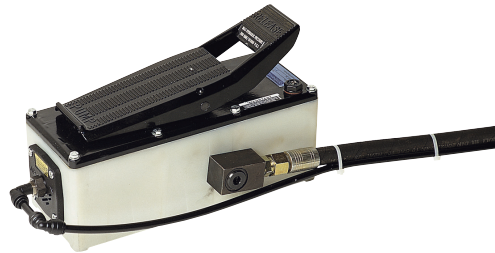
TECHNICAL SPECIFICATIONS:

Available for: H CRIMP 80, HCRIMP 137

Input pressure: 8 bar

Maximum output pressure: 350 bar

Supplied without hose.



Swaging Machine Table DST

TECHNICAL SPECIFICATIONS:

Dimensions (mm): L700 x H700 x W485

Crimper table for storage of die sets, pistol grip and grease pump.



Swaging Machine Table DSP

TECHNICAL SPECIFICATIONS:

Dimensions (mm): 550x600

Die panel or storage of die sets.





**Pressure Testing Bench
S TEST 1500**

TECHNICAL SPECIFICATIONS:

Hose Dimension:	3/16" - 2"
Max Test Pressure:	1500 bar (21000 psi)
Min recommended TP:	250 bar
Max Hoses per Test:	5
Manifold:	5 outputs 3/8"
Test Liquid:	Water
Air Inlet:	8 bar

Possibility for connection of light.



**Pressure Testing Bench
S TEST 2500**

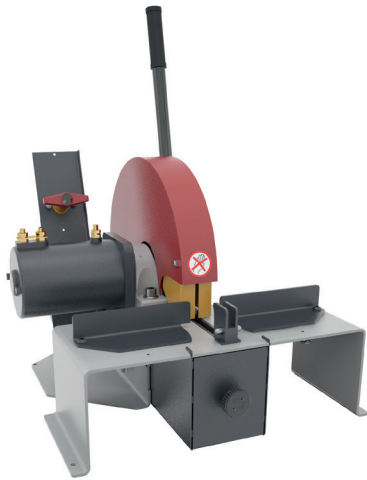
TECHNICAL SPECIFICATIONS:

Hose Dimension:	1/4" - 2"
Max Test Pressure:	2500 bar (35000 psi)
Min recommended TP:	250 bar
Max Number of Hoses:	5
Manifold:	5 outputs 3/8"
Test Liquid:	Water
Air Inlet:	8 bar

Possibility for connection of light.



Available With PC computer



**Cutting Machine
V CUT 12V / 24V (FC 32 12 V)**

TECHNICAL SPECIFICATIONS:

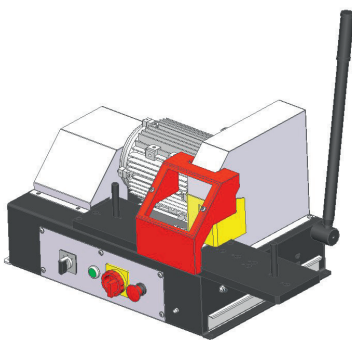
Weight:	38 kg
Hose Dimension:	1" 1/4 4SP
Max Hose OD:	50 mm
Standard Engine:	12V DC / 24V DC
Cutting Disc:	Scalloped blade 254 mm
Max Hose OD:	50 mm



**Cutting Machine
S CUT 22 (FC 32)**

TECHNICAL SPECIFICATIONS:

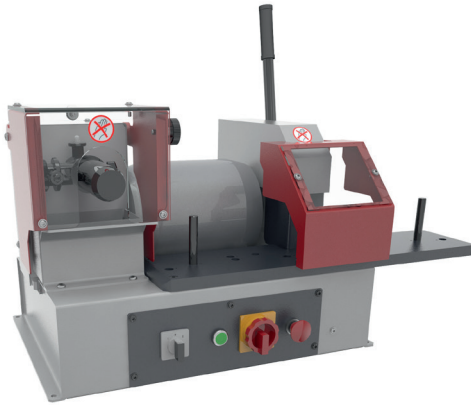
Weight:	42 kg
Hose Dimension:	1,1/4" 4SP
Max Hose OD:	50 mm
Standard Engine:	2.2 kW / 230-400V 3 ph
Speed:	3000 rpm
Cutting Disc:	Scalloped blade 254 mm



**Cutting Machine
S CUT 30 ECO**

TECHNICAL SPECIFICATIONS:

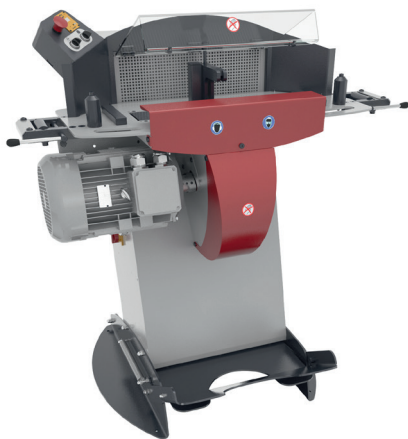
Weight:	60 kg
Hose Dimension:	2" 4SP
Max Hose OD:	85mm
Standard Engine:	3 kW / 230-400V 3 ph
Speed:	3000 rpm
Cutting Disc:	Scalloped blade 300 mm



Cutting and Brushing Machine S DUO 30

TECHNICAL SPECIFICATIONS:

Weight:	115 kg
Hose Dimension:	2" 4SP
Max Hose OD:	85 mm
Standard Engine:	3 kW / 230-400V 3 ph
Speed:	3000 rpm
Cutting Disc:	Scalloped blade 300mm
Tool selection:	External ESE, Internal IS



Cutting Machine S CUT 55

TECHNICAL SPECIFICATIONS:

Weight:	240 kg
Hose Dimension:	2" 6SP
Max Hose OD:	80 mm
Standard Engine:	5.5 kW / 230-400V 3 ph
Speed:	3000 rpm
Cutting Disc:	Scalloped blade 400 mm



Pneumatic Cutting Machine P CUT 90

TECHNICAL SPECIFICATIONS:

Weight:	350 kg
Hose Dimension:	3" 6SP
Max Hose OD:	125 mm
Standard Engine:	9.0 kW / 230-400V 3 ph
Speed:	3000 rpm
Cutting Disc:	Scalloped blade 520mm

H SKIVE

Tool for Internal and External Hose Skiving

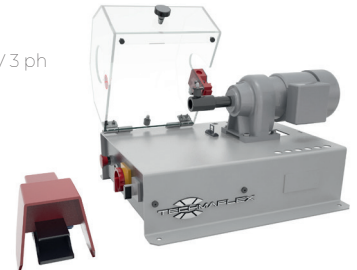
For hose dimensions: 1/4" - 2"
Used together
with IS and ESE



S SKIVE 100

Tool for Internal and External Hose Skiving

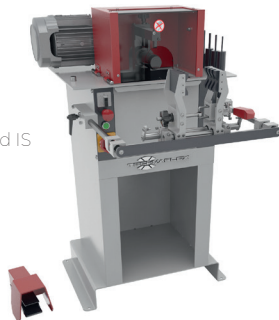
Weight: 36kg
Hose Dimension: 1/4" - 2"
Standard Engine: 0.25 kW / 230-400V 3 ph
Speed: 100 rpm
Tool selection E: ESE/ESP and IS



P SKIVE 205

Tool for Internal and External
Hose Skiving

Weight: 100 kg
Hose Dimension: 1/4" - 3"
Standard Engine: 0.75 kW
Speed: 205 rpm
Tool selection E: ESE/ESP and IS



S MARK 50

For Sleeve Marking

For sleeve dimensions: 1/4" - 2"
Character size: 6 x 3mm
1 or 2 lines
16 character per line



IS KIT

Tool for Internal Hose Skiving

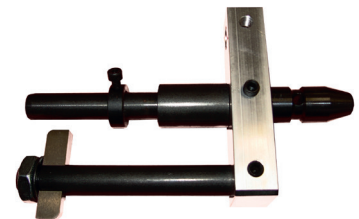
For Hose Dimensions: 1/4" - 2"



ESP KIT

Tool for External Hose Skiving

For Hose Dimensions: 1/4" - 2"



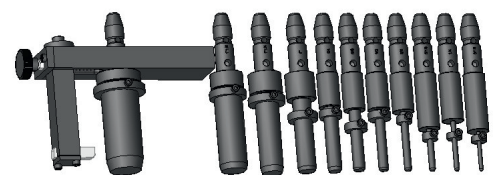
ESE KIT

Tool for External hose Skiving



ESA KIT

Tool for External hose Skiving



Hose Reel DV 32

For Hose Dimensions: 1/4" - 1 1/4"

Dimensions: Diameter 1200 mm - H 620 mm

Winding Diameter: 300 - 400 mm



Hose Reel DVC 32

For Hose Dimensions: 1/4" - 1 1/4"

Dimensions: Diameter 1200 mm - H 620 mm

Winding Diameter: 400 mm



Pusher S PUSH 1500

For Hose Dimensions: 3/4" - 2"

Coupling Push Force: 1500 daN (at 120 bar)

Tightening for the hose: 550 daN (at 7 bar air pressure)

Minimum Hose OD: 28 mm

Maximum Hose OD: 73 mm

Comes with hydro-pneumatic foot pump.



Rail RC 100

Available for:

S CUT 22, 55

P CUT 30

S DUO 30

