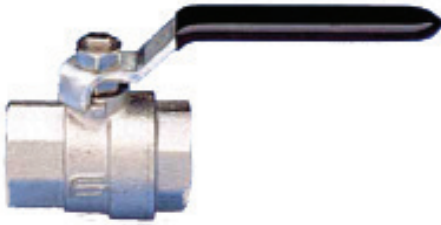


Group 9

Valves



Page	Contents
2	Index
3	Ball Valves Low Pressure, Full bore
4	Ball Valves Low pressure, 3-way / L-bore / T-bore
5	Ball Valves Low pressure Ball Valves - Flanges
6	Needle / Regulation Valves. BSP
7	Butterfly Valves
8	Ball Valves High pressure, Steel
9	Ball Valves High pressure, 3-way / L-bore / T-bore
10	Ball Valves High pressure 6000 psi - 10000 psi.
11	Check Valves, Europa Low pressure
11	Check Valves, Snap-Tite



BALL VALVE Type 115
Nickel-plated Brass
Full Bore

CONSTRUCTION:

Nickel-plated pressure-brass valve body.
Ball of hard chrome-plated brass.
Ball Seal - PTFE.
Stem Seal - PTFE. 1/4" - 2"

Pressure:	1/4" - 1/2"	BSP: 50 bar	NPT: 50 bar
	3/4" - 1"	40 bar	40 bar
	1.1/4" - 1.1/2"	30 bar	30 bar
	2"	25 bar	25 bar
	2.1/2"	18 bar	18 bar reduced bore
	3"	16 bar	14 bar reduced bore
	4"	14 bar	12 bar reduced bore

Temp. Range: -20°C to +150°C

Applications: Water, steam, compressed air, oils, fuel, liquefied gases, etc.

Dim. Conct. Thread	Type 115 Female BSP	Type 115 Female NPT
1/4"	T115-04RP	T115-04F
3/8"	T115-06RP	T115-06F
1/2"	T115-08RP	T115-08F
3/4"	T115-12RP	T115-12F
1"	T115-16RP	T115-16F
1.1/4"	T115-20RP	T115-20F
1.1/2"	T115-24RP	T115-24F
2"	T115-32RP	T115-32F
2.1/2"	T115-40RP	T115-40F
3"	T115-48RP	T115-48F
4"	T115-64RP	T115-64F



BALL VALVE Type 125
Stainless Steel AISI 316
Full Bore

CONSTRUCTION:

AISI 316 stainless steel valve body, ball and spindle.
Ball Seal - PTFE.
Stem Seal - PTFE and Viton.
Available with BSP and NPT female thread.

Pressure:	1/4" - 2"	BSP/NPT 69 bar
	2.1/2" - 3"	BSP/NPT 63 bar
	4"	BSP/NPT 55 bar

Temp. Range: -20°C to +180°C

APPLICATIONS: ROBUST AND SOLID BALL VALVE FOR WATER, OIL, GASOLINE, gas, air, steam, food articles and a variety of chemicals.

Dim. Conct. Thread	Type 125 Female BSP	Type 125 Female NPT
1/4"	T125-04RP	T125-04F
3/8"	T125-06RP	T125-06F
1/2"	T125-08RP	T125-08F
3/4"	T125-12RP	T125-12F
1"	T125-16RP	T125-16F
1.1/4"	T125-20RP	T125-20F
1.1/2"	T125-24RP	T125-24F
2"	T125-32RP	T125-32F
2.1/2"	T125-40RP	T125-40F
3"	T125-48RP	T125-48F
4"	T125-64RP	T125-64F



BALL VALVE Type 128
Nickel-plated Brass
3-way w/ L-bore

CONSTRUCTION:

Nickel-plated pressure-brass valve body.
Hard chrome-plated brass ball.
Ball Seal - PTFE.
Stem Seal - PTFE. 1/4" - 2"
Available with BSP and NPT female thread.

Pressure: 1/4" - 2" BSP 25 bar

Temp. Range: -15°C to +120°C

APPLICATIONS: Water, steam, compressed air, oils, fuel,
liquefied gases, etc.

Dim. Conct. Thread	Type 125 Female BSP	Type 126 Handle
1/4"	T128-04RP	T126-04
3/8"	T128-06RP	T126-06
1/2"	T128-08RP	T126-08
3/4"	T128-12RP	T126-12
1"	T128-16RP	T126-16
1,1/4"	T128-20RP	T126-20
1,1/2"	T128-24RP	T126-24
2"	T128-32RP	T126-32



BALL VALVE Type 130/131
Stainless Steel AISI 316
T130: 3-way w/ L-bore
T131: 3-way w/ T-bore

CONSTRUCTION:

AISI 316 stainless steel valve body, ball and spindle.
Ball Seal - PTFE.
Stem Seal - PTFE and Viton.
Available with BSP and NPT female thread.

Pressure: 1/4" - 2" BSP/NPT 69 bar

Temp. Range: -15°C to +175°C

Applications: Robust and solid ball valve for water, oil, gasoline, gas, air, steam, food articles and a variety of chemicals.

Dim. Conct. Thread	L-bore Type 130 Female BSP	L-bore Type 130 Female NPT	T-bore Type 131 Female BSP	T-bore Type 131 Female NPT
1/4"	T130-04RP	T130-04NPT	T131-04RP	T131-04NPT
3/8"	T130-06RP	T130-06NPT	T131-06RP	T131-06NPT
1/2"	T130-08RP	T130-08NPT	T131-08RP	T131-08NPT
3/4"	T130-12RP	T130-12NPT	T131-12RP	T131-12NPT
1"	T130-16RP	T130-16NPT	T131-16RP	T131-16NPT
1,1/4"	T130-20RP	T130-20NPT	T131-20RP	T131-20NPT
1,1/2"	T130-24RP	T130-24NPT	T131-24RP	T131-24NPT
2"	T130-32RP	T130-32NPT	T131-32RP	T131-32NPT

BALL VALVE Type 127 Nickel-plated Brass Full Bore



CONSTRUCTION:

Nickel-plated pressure-brass valve body.
Hard chrome-plated brass ball.
Ball Seal - PTFE.
Stem Seal - Viton
Available with flanges according to DIN 2632/33 PN 10/16.

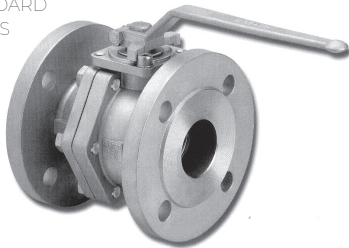
Pressure: 1/4" - 4" 16 bar

Temp. Range: -20°C to +150°C

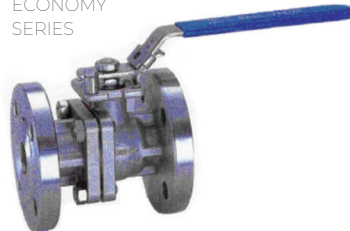
Applications: Water, steam, compressed air, oils, fuel, liquefied gases, etc.

Dim. Conct. Thread	Type 127 DIN fl.	Type 123 Handle
3/4"	T127-12	T123-12
1"	T127-16	T123-16
1,1/4"	T127-20	T123-20
1,1/2"	T127-24	T123-24
2"	T127-32	T123-32
2,1/2"	T127-40	T123-40
3"	T127-48	T123-48
4"	T127-64	T123-64

STANDARD SERIES



ECONOMY SERIES



BALL VALVE Type 137/138 DIN and ANSI Flanges Stainless Steel AISI 316 Standard and Economy Series

CONSTRUCTION:

CF8M/316 valve body.
AISI 316 ball.
Ball Seal - PTFE.
Stem Seal - Viton
Firesafe design.
Standard and economy series.
Available with flanges according to DIN 2632/33 PN 10/16 and ANSI B16.5 Class 150

Pressure: 3/4" - 4" 16 bar

Temp. Range: -20°C to +150°C

APPLICATIONS: Water, steam, compressed air, oils, fuel, liquefied gases, etc.

Dim. Conct. Thread	STANDARD Type 137 DIN fl.	ECONOMY Type 137E DIN fl.	STANDARD Type 138 ANSI 150#.	ECONOMY Type 138E ANSI 150#.
3/4"	T137-12SS	T137E-12SS	T138-12SS	T138E-12SS
1"	T137-16SS	T137E-16SS	T138-16SS	T138E-16SS
1,1/4"	T137-20SS	T137E-20SS	T138-20SS	T138E-20SS
1,1/2"	T137-24SS	T137E-24SS	T138-24SS	T138E-24SS
2"	T137-32SS	T137E-32SS	T138-32SS	T138E-32SS
2,1/2"	T137-40SS	T137E-40SS	T138-40SS	T138E-40SS
3"	T137-48SS	T137E-48SS	T138-48SS	T138E-48SS
4"	T137-64SS	T137E-64SS	T138-64SS	T138E-64SS

NEEDLE / REGULATION VALVES



TYPE 140
Construction:
Brass valve body.
BSP connection
Pressure: 1/4" - 3/4" 210 bar
Temp: -20°C to +150°C
Applications:
Water, steam, comp. air, oils, fuel,
liquefied gases.



TYPE 141
Construction:
Carbon steel valve body.
BSP connection
Pressure: 1/4" - 3/4" 350 bar
Temp: -20°C to +150°C
Applications:
Water, steam, comp. air, oils, fuel,
liquefied gases.



TYPE 142
Construction:
Carbon steel valve body.
BSP connection
Pressure: 1/4" - 3/4" 400 bar
Temp: -20°C to +150°C
Applications:
Water, steam, comp. air, oils, fuel,
liquefied gases.



TYPE 143
Construction:
AISI 316 valve body.
BSP=RP/NPT=F connection
Pressure: 3/4" - 1" 413 bar
Temp: -20°C to +150°C
Applications:
Water, steam, comp. air, oils, fuel,
liquefied gases.

Dim. Conct. Thread	Type 140 Brass Female BSP	Type 141 Carbon Steel Female BSP	Type 142 Carbon Steel Female BSP	Type 143 AISI 316 Female BSP/NPT
1/4"	T140-04	T141-04RP	T142-04RP	-
3/8"	T140-06	T141-06RP	T142-06RP	-
1/2"	T140-08	T141-08RP	T142-08RP	-
3/4"	T140-12	T141-12RP	T142-12RP	T143-12RPSS/FSS
1"	-	-	-	T143-16RPSS/FSS

NEEDLE / REGULATION VALVES
With Check Valve



TYPE 144
Construction:
Brass valve body.
BSP connection
Pressure: 1/4"-1/2" 210 bar
Temp: -20°C to +150°C
Applications:
Water, steam, compressed air,
oils, fuel, etc.



TYPE 145
Construction:
Carbon steel valve body.
BSP connection
Pressure: 1/4"-1/2" 350 bar
Temp: -20°C to +150°C
Applications:
Water, steam, compressed air,
oils, fuel, etc.



TYPE 146
Construction:
Carbon steel valve body.
BSP connection
Pressure: 1/4" -3/4" 400 bar
Temp: -20°C to +150°C
Applications:
Water, steam, compressed air,
oils, fuel, etc.



TYPE 147
Construction:
AISI 316 valve body.
BSP connection
Pressure: 3/4"-1/2" 400 bar
Temp: -20°C to +150°C
Applications:
Water, steam, compressed air,
oils, fuel, etc.

Dim. Conct. Thread	Type 144 Brass Female BSP	Type 145 Carbon Steel Female BSP	Type 146 Carbon Steel Female BSP	Type 147 AISI 316 Female BSP
1/4"	T144-04RP	T145-04RP	T146-04RP	T147-04RPSS
3/8"	T144-06RP	T145-06RP	T146-06RP	T147-06RPSS
1/2"	T144-08RP	T145-08RP	T146-08RP	T147-08RPSS
3/4"	-	-	T146-12RP	-



BUTTERFLY VALVE Wafer Type 170/171/172/173 DIN/ANSI Flanges Standard and Economy Series

CONSTRUCTION:

Wafer type butterfly valve. Cast-iron valve body. AISI 316/ Aluminium bronze disc.
Gasket EPDM - Buna/NBR. Lock on the handle.
ISO 5211 Top for Actuator
Standard and economy series. Available for DIN or ANSI.

Pressure: 1 1/2" - 8" 16 bar
TEMP. RANGE: -20°C to +150°C
APPLICATIONS: Water, air, oils, fuel, gases, etc.

Dim. Conct. Flange	STANDARD Type 170 EPDM Gasket 316 Disc	STANDARD Type 171 BUNA Gasket 316 Disc	STANDARD Type 172 EPDM Gasket Alu.Bronze Disc	STANDARD Type 173 BUNA Gasket Alu.Bronze Disc	ECONOMY Type 170E EPDM Gasket 316 Disc	ECONOMY Type 171E BUNA Gasket 316 Disc	ECONOMY Type 172E EPDM Gasket Alu.Bronze Disc	ECONOMY Type 173E BUNA Gasket Alu.Bronze Disc
1 1/2"	T170-38	T171-38	T172-38	T173-38	T170E-38	T171E-38	T172E-38	T173E-38
2"	T170-50	T171-50	T172-50	T173-50	T170E-50	T171E-50	T172E-50	T173E-50
2 1/2"	T170-63	T171-63	T172-63	T173-63	T170E-63	T171E-63	T172E-63	T173E-63
3"	T170-75	T171-75	T172-75	T173-75	T170E-75	T171E-75	T172E-75	T173E-75
4"	T170-100	T171-100	T172-100	T173-100	T170E-100	T171E-100	T172E-100	T173E-100
5"	T170-125	T171-125	T172-125	T173-125	T170E-125	T171E-125	T172E-125	T173E-125
6"	T170-150	T171-150	T172-150	T173-150	T170E-150	T171E-150	T172E-150	T173E-150
8"	T170-200	T171-200	T172-200	T173-200	T170E-200	T171E-200	T172E-200	T173E-200



AVAILABLE
ON REQUEST

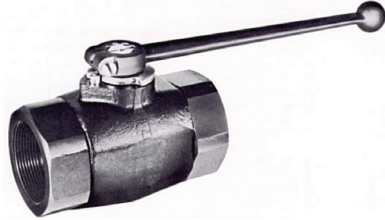
BUTTERFLY VALVE Lug Type DIN, ANSI Flanges Standard Series

CONSTRUCTION:

Lug type butterfly valve. Cast-iron valve body. AISI 316/ Aluminium bronze disc.
Gasket EPDM - Buna/NBR. Lock on the handle. ISO 5211 Top for Actuator.
Available for DIN or ANSI.

Pressure: 1 1/2" - 8" 16 bar
Temp. Range: -2°C to +150°C
APPLICATIONS: Water, air, oils, fuel, gases, etc

BALL VALVES HIGH PRESSURE



CONSTRUCTION:

Block Valve: Valve body - steel 1/8" - 1.1/4"
 Forged steel: Valve body - CK 45 1.1/2" - 2"
 Hard chrome-plated steel ball.
 Ball Seal - polyamide.
 Stem Seal - BUNA N.
 Available with BSP and NPTF female thread.

From 1/8" to 1.1/4" is block valve (BKH).
 1.1/2" and 2" have forged steel valve body (SKH).

Pressure: 1/8" - 1/2" 500 bar
 3/4" 400 bar
 1" - 2" 350 bar

Temp. Range: -10°C to +100°C

APPLICATIONS: High pressure hydraulic, water, air, fuel,
 liquefied gases, liquids, etc.

BALL VALVE HIGH PRESSURE BKH/SKH Type 8000/8100

Dim. Conct. Thread	Type 8000 Female BSP	Type 8100 Female NPT
1/8"	T8000-02	T8100-02
1/4"	T8000-04	T8100-04
3/8"	T8000-06	T8100-06
1/2"	T8000-08	T8100-08
3/4"	T8000-12	T8100-12
1"	T8000-16	T8100-16
1.1/4"	T8000-20	T8100-20
1.1/2"	T8000-24	T8100-24
2"	T8000-32	T8100-32



CONSTRUCTION:

Block valve. Valve body - AISI 316L
 AISI 316L ball
 Ball Seal - polyamide.
 Stem Seal - BUNA N.
 Available with BSP and NPTF female thread.

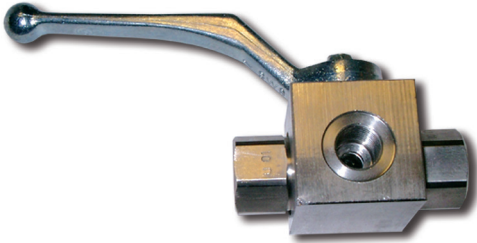
Pressure: 1/8" - 1/2" 500 bar
 3/4" 400 bar
 1" - 2" 350 bar

Temp. Range: -20°C to +120°C

APPLICATIONS: High pressure hydraulic, water, air, fuel,
 liquefied gases, liquids, etc.

BALL VALVE HIGH PRESSURE RKH Type 8000/8100 Stainless Steel AISI 316 L

Dim. Conct. Thread	Type 8000 Female BSP	Type 8100 Female NPT
1/8"	T8000-02SS	T8100-02SS
1/4"	T8000-04SS	T8100-04SS
3/8"	T8000-06SS	T8100-06SS
1/2"	T8000-08SS	T8100-08SS
3/4"	T8000-12SS	T8100-12SS
1"	T8000-16SS	T8100-16SS
1.1/4"	T8000-20SS	T8100-20SS
1.1/2"	T8000-24SS	T8100-24SS
2"	T8000-32SS	T8100-32SS



BALL VALVE HIGH PRESSURE 3-WAY BK3 - Type 9000 - L-bore BK3 - Type 9100 - T-bore

CONSTRUCTION:

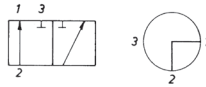
Block valve. Valve body - steel.
Hard chrome-plated steel ball.
Ball Seal - polyamide.
Stem Seal - BUNA N.
Available with BSP female thread.

Pressure: 1/8" - 3/8" 400 bar
1/2" - 2" 350 bar

Temp. Range: -10°C to +100°C

APPLICATIONS: High pressure hydraulic, water, air, fuel,
liquefied gases, liquids, etc.

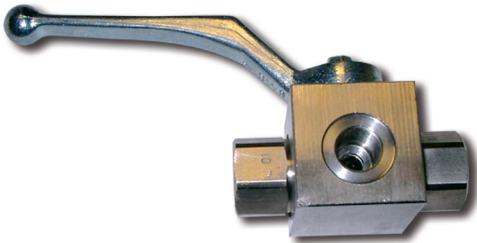
L-bore



T-bore



Dim. Conct. Thread	Type 9000 L-bore	Type 9100 T-bore
1/8"	T9000-02	T9100-02
1/4"	T9000-04	T9100-04
3/8"	T9000-06	T9100-06
1/2"	T9000-08	T9100-08
3/4"	T9000-12	T9100-12
1"	T9000-16	T9100-16
1.1/4"	T9000-20	T9100-20
1.1/2"	T9000-24	T9100-24
2"	T9000-32	T9100-32



BALL VALVE HIGH PRESSURE 3-WAY BK3 - Type 9000 - L-bore Stainless Steel AISI 316 L

CONSTRUCTION:

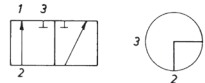
Block valve. Valve body - AISI 316L
AISI 316L ball
Ball Seal - polyamide.
Stem Seal - BUNA N.
Available with BSP female thread.

Pressure: 1/4" - 3/8" 400 bar
1/2" - 1" 350 bar

Temp. Range: -20°C to +120°C

APPLICATIONS: High pressure hydraulic, water, air, fuel,
liquefied gases, liquids, etc.

L-bore



Dim. Conct. Thread	Type 9000 L-bore
1/4"	T9000-04SS
3/8"	T9000-06SS
1/2"	T9000-08SS
3/4"	T9000-12SS
1"	T9000-16SS



**BALL VALVE
HIGH PRESSURE 6000 PSI
PB Type 82
Stainless Steel AISI 316 L**

CONSTRUCTION:

Block valve. Valve body - AISI 316L
AISI 316L ball.
Ball Seal - PEEK.
Stem Seal - PTFE/PEEK.
Available with BSP/NPT female thread.

Pressure: 1/4" - 1" 413 bar

Temp. Range: -50°C to +250°C

Applications: High pressure hydraulic, water, air, fuel,
liquefied gases, liquids, etc.

Dim. Conct. Thread	Type 8300 BSP	Bore Diam. mm	Type 8400 NPT	Bore Diam. mm
1/4"	T82B-04SS	10	T82N-04SS	10
3/8"	T82B-06SS	10	T82N-06SS	10
1/2"	T82B-08SS	10	T82N-08SS	10
3/4"	T82B-12SS	13	T82N-12SS	13
1"	T82B-16SS	19	T82N-16SS	19



**BALL VALVE
HIGH PRESSURE 10.000 PSI
UB Type 83
Stainless Steel AISI 316 L**

CONSTRUCTION:

Block valve. Valve body - AISI 316L
KAISI 316L ball.
Ball Seal - PEEK.
Stem Seal - PTFE/PEEK.
Available with BSP/NPT female thread.

Pressure: 1/4" - 1" 690 bar

Temp. Range: -20°C to +250°C

Applications: High pressure hydraulic, water, air, fuel,
liquefied gases, liquids, etc.

Dim. Conct. Thread	Type 8300 BSP	Bore Diam. mm	Type 8400 NPT	Bore Diam. mm
1/4"	T83B-04SS	10	T83N-04SS	10
3/8"	T83B-06SS	10	T83N-06SS	10
1/2"	T83B-08SS	10	T83N-08SS	10
3/4"	T83B-12SS	13	T83N-12SS	13
1"	T83B-16SS	19	T83N-16SS	19



CHECK VALVE
Type «EUROPA»

- Construction:** Brass valve body. Glass fiber reinforced synthetic material valve disc. Valve seat has vulcanized elastic sealing of synthetic special rubber. Valve disc coating and spring are CrNi steel.
- Working Pressure:** 3/8" - 1" 25 bar
1 1/4" - 2" 18 bar
2 1/2" - 4" 12 bar
- Temp. Range:** Max. -20 +100°C
- Applications:** Sanitary and heating systems, water, compressed air, hydraulic, fuel, etc. Can be assembled in any position. Available with BSP female thread.
- Opening pressure:** 0.05 bar

Type/dim.	1/4"	3/8"	1/2"	3/4"	1"	1.1/4"	1.1/2"	2"	2.1/2"	3"	4"
Check Valve Part no. EURO100	-04	-06	-08	-12	-16	-20	-24	-32	-40	-48	-64
Filter for Check Valve Part no. EURO102	-04	-06	-08	-12	-16	-20	-24	-32	-40	-48	-64



CHECK VALVE
«Inline Check Valves»
Snap-Tite Type CPIFF/3C

- Construction:** Valve body/inside parts of steel. Available with BSP/NPT female thread. Opening pressure 5 PSI (0.35 bar). Valves for opening pressure 1 Bar, 1.75 Bar and 4.5 Bar available on request. VITON gasket.
- Working Pressure:** 1/4" - 1" 5000 PSI (350 bar). 1 1/4" - 2" 3000 PSI (210 BAR)
- Temp. Range:** -29°C to +190°C
- Applications:** Wide application area where free flow in one direction and blocked flow in the opposite direction is required.
- Safety factor** 4:1

Dim.	1/4"	3/8"	1/2"	3/4"	1"	1.1/4"	1.1/2"	2"
Hex. mm	19.5	25.40	31.75	35.05	44.45	50.80	63.50	82.55
Length mm	50.04	66.04	82.55	109.98	121.41	146.30	165.35	184.90
Flow l/min.	11.40	30.30	45.40	75.70	113.55	340.65	473.15	662.40
Weight kg	0.09	0.11	0.41	0.57	1.02	1.70	3.54	5.90
Part no. BSP	CPIFF-2RP	CPIFF-3RP	CPIFF-4RP	CPIFF-6RP	CPIFF-8RP	3C20RP-RP	3C24RP-RP	3C32RP-RP
Part no. NPT	CPIFF-2F	CPIFF-3F	CPIFF-4F	CPIFF-6F	CPIFF-8F	3C20F-F	3C24F-F	3C32F-F



CHECK VALVE
«Inline Check Valves»
Snap-Tite Type S6C
AISI 316

Construction: Valve body and inside parts of AISI 316 stainless steel.
 Comes with NPT female thread as standard.
 Available with BSP and JIC thread on request.
 Opening pressure 5 PSI (0.35 BAR). Valves for different opening pressures available on request. VITON gasket.

Working Pressure: 6000 PSI (413 bar).

Temp. Range: -15°C to +170°C

Applications: Wide application area where free flow in one direction and blocked flow in the opposite direction is required.

Safety factor 4:1

Dim.	1/4"	3/8"	1/2"	3/4"	1"
Hex. mm	19.5	28.45	31.75	41.15	47.75
Length mm	71.60	85.85	94.75	124.70	154.20
Flow l/min.	11.40	30.30	45.45	75.70	113.55
Weight kg.	0.13	0.37	0.54	0.93	1.54
Part no. NPT	S6C4F-F	S6C6F-F	S6C8F-F	S6C12F-F	S6C16F-F