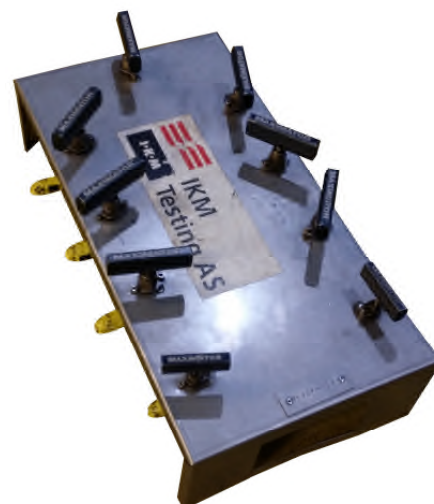




IKM Testing AS

Unit No. TM20K-153

TESTMANIFOLD



Dimension	:	L 640 mm	W 330 mm	H 230 mm
Weight	:	17,5 kg		
Lifting/Transport	:	Transport on pallet		

Type	:	1/4" body with 1/4" connections
P max.	:	1378 Bar / 20 000 PSI
Connections	:	4ea 1/4" BSP

Other information	:	Material 316SS, Testvalves.
-------------------	---	-----------------------------